

*The*

# *Pom Reader*

AUGUST 1987



**Canadian Champion Dainti D-Nee's Desirae**

**On The Cover:**

*She's Delightful, She's Divine, She's...*

*Canadian Champion  
Dainti D-Nee's Desirae*



**Ch. D-Nee's Darin' Duffie x Dainti Devilish Delite**

*DEE* is pictured on the cover finishing her Canadian Championship in 3 shows at the age of 10 months. My deepest thanks to all of the judges that realize her potential. She has a wonderful temperament, great movement, and is very sound. Watch for her in the U.S. show rings.

Owner/Handler

**Susann Stackhouse**

**PHILBROOKS FANCY KENNELS**

Box 1070, Rancocas Road

Mount Holly, NJ 08060

(609) 267-4644

***Dee's wins so far:***

2 Group II

1 Group IV

3 Puppy Group I

1 Best of Breed

6 Best of Opposite

1 Best of Winners

***Puppies Occasionally***

S  
O  
U  
T  
H  
L  
A  
N  
D

**Proudly presents SOUTHLAND'S TOAST TO JAMEL.** "JAMIE" is pictured taking the first of two 4 point majors - from the puppy class. **Jamie** is a combination of **BIS CH. BEV-NOR'S TOASTED FUDGE & BEV-NOR'S FUDGE RIPPLE**. Jamie's sire: **Ch. Southland's Toasted Fudge**. Dam: **Ch. Jamel's Smudge Orange Parfait**, bred by **Eleanor Clark** and myself and owned by myself. **Jamie** is **Lil Toasty's** 7th major pointed pup this year and an 8th is pointed. We are so proud of him. **Southland** would like to congratulate **Opal Peterson** on her Group I with **Southland's New Year Toast** at the Houma Match - watch for this "Lil Toasty" girl out this fall...and **Southland** is so very proud to announce the acquisition of a lovely puppy **Southland's Ms. Ruth of Great Elms** from the infamous great lady **Ruth Beam**. Thanks so much Ruth for honoring me with **Little Ruthie** - watch for Ms. Ruth in the ring this spring.

**SOUTHLAND — Rays of Sunshine**

**Charlotte Creed**

6618 Lost Ridge Pineville, LA 71360

Ph. 318-466-3456

S  
O  
U  
T  
H  
L  
A  
N  
D

**Proudly introduces SOUTHLAND'S MR. V.I.P. O'IDA.** "Zack" is pictured taking his 3rd major at 7 months of age. Zack is the grandson and great-grandson of **BIS CH. BEV-NOR'S TOASTED FUDGE**. Everyone thinks Zack is going to be a great one - watch with him with **Luc Boileau** for owner **Edward B. Jenner**. **Southland** is so very proud of **CH. SOUTHLAND'S TOASTED FUDGE** - Zack's sire. **Lil Toasty** has 7 puppies major pointed and another pointed...not bad for a debut as a father, **Lil Toasty!**

Thank so much to **BILL & BEV NORRIS** for your guidance, encouragement, and friendship.

**SOUTHLAND — Rays of Sunshine**

**Charlotte Creed**

6618 Lost Ridge Pineville, LA 71360

Ph. 318-466-3456

# The Pom Reader

August 1987

Volume 3, Number 6



Artwork by Nancy Ross

## TABLE OF CONTENTS

8. **VIEW POINT** by Victoria Powell  
*Better Homes and Kennels!*
12. **GENERALLY SPEAKING** by Susan Wade  
Susan brings cool thoughts in the summer heat.
13. **POMERANIAN CLUB OF MICHIGAN**  
Specialty photos.
14. **ASK SHU-SHU**  
Ablly assisted by Shannon Johnson.
15. **DOWN MEMORY LANE...**  
Elva Cohen McGilbry tells of her life with Poms.
16. **UPDATE**  
Top Ten Exhibitors, January-July AKC Gazette.
18. **SPECIALS ADDITION**  
Top Twenty Poms, January-July AKC Gazette.
19. **CLUB NEWS**  
Ohio Valley Pom Club
19. **POMERANIAN VIDEO UPDATE**  
Chairman Dorothy Bonner reports on the script conference.
19. **LETTERS**  
Our readers respond.

The Pom Reader is published by Doll-McGinnis Enterprises, Incorporated, 8840 thru 8848 Beverly Hills, Lakeland, Florida, 33809, out of admiration for the purebred Pomeranian. EDITOR: JOE MCGINNIS. BUSINESS MANAGER: DUANE DOLL. Postage paid at Lakeland, FL. No part of this publication may be reproduced in any form without the express written permission of the editor. The opinions expressed in this publication either editorially or in advertising copy are those of the authors and do not necessarily constitute endorsement by the publishers. The editor reserves the right to reasonably edit all copy submitted. All articles submitted become the property of the publishers. Subscription price for Third-Class Service in the continental United States: \$24.00. Foreign and First Class prices upon request. Issues of the Pom Reader are sent as a courtesy to all AKC licensed Pomeranian, Toy Group, and Best In Show judges. Direct all inquiries to: Joe McGinnis, Editor, The Pom Reader, 8848 Beverly Hills, Lakeland, FL 33809. Tel: (813) 858-3839.

This issue of the Pom Reader is made possible in part by the following advertisers:

Front Cover:

SUSANN STACKHOUSE  
PHILBROOK'S FANCY KENNELS

AM. CHAMPION PED. SVC.....	13
BAKER, O.....	17
BARTHOLOMEW, N. & D.....	13
CARSON, M. & B.....	17
COOK, S.....	15
CREED, C.....	3
FIDDICK, R. & J.....	14
FREIA, J.....	12
GAD, N.....	17
GODDARD, T. & S.....	12
GRAF, H.....	17
GRIFFITH, K.....	11
HARTZ, K.....	15
HEARTZ, J. & C.....	14
HENDRICKS, B. & C.....	17
HIEMENZ, S.....	17
HOVEY, J.....	13
JLS ANIMAL SPECIALTIES.....	11
JACKSON, C.....	7
JENSEN, P.....	11
JOHNSON, S.....	10
LUGINSLAND, J.....	7
MAJEWSKI, J.....	5
MARCHBANKS, M. & J.....	11
MARTIN, D.....	14
MASNICK, S.....	13
MCKAMEY, MRS. N.....	17
MILLER, K. & E.....	12
NORRIS, B.....	17
PFEFFER, C.....	15
PIAZZA, S.....	15
PRESSER, M. & M.....	13
REILLY, R. & J.....	7
ROSENBAUM, M.....	5
SANDIFER, D.....	13
STACKHOUSE, S.....	1,2
STAFFORD, R. & J.....	13
SUBY, R. & P.....	13
TAYLOR, J.....	7
TERRITO, S.....	17
WELLNITZ, M.A.....	17

# JEANETTE'S PUPPILUV

(formerly called Green Acres)

## PRESENTS



"DONNA"

### Ch. Green Acres' Bi-Mar Prima Donna

"Donna" finished with a 3 point major in Ohio under judge **Betty Munden**, shown with TLC by **Brenda Hoch**. Many thanks to the judges that recognized her championship qualities and the many comments from all.

Special thanks to **Mary Rosenbaum** for our new **Ch. Bi-Mar Sunny Go Lucky** (a son of **BIS Ch. Bi-Mar Sundance Kid**).

We are looking forward to **Lucky & Donna's** first litter.

**Jeanette Majewsky**

RR1, Box 749, Houtzdale, PA 16651

814-378-8506

## FOR SALE

Whelped 5/3/85, sable female that is litter mate to **Ch. Bi-Mar Sunny Go Lucky**. Sire is **BIS Ch. Bi-Mar Sundance Kid** and dam is Black & Tan littermate to **BIS Ch. Bev-Nor's Toasty's Tan-Ya**. Grandsire, **BIS Ch. Bev-Nor's Toasted Fudge**. Show Prospect. \$850.00

Whelped 1/6/86, Red sable male sired by **Ch. Bi-Mar Sunny Go Lucky** and out of a 3/4 sister to **BIS Ch. Bi-Mar Sundance Kid**. Very typey show prospect. \$450.00

Whelped 10/1/85, red orange male, full brother to **Ch. Bi-Mar Sundance Charmer** and **Ch. Autumn's Red Blaze of Bi-Mar**. Show quality and available to show home only.

Whelped 4/5/86, red orange male sired by half brother and out of a 3/4 sister to **BIS Ch. Bi-Mar Sundance Kid**. Show prospect \$650.00.

Whelped 7/27/85, sable male that has 8 AKC points and out of a litter sister to **BIS Ch. Bi-Mar Sundance Kid's** dam and out of a Black & Tan male that is littermate to **BIS Ch. Bev-Nor's Toasty's Tan-Ya**. Grand-sires are **BIS Ch. Sunray's Lit Beaver** and **BIS Ch. Bev-Nor's Toasted Fudge**.

We also have three litters sired by **BIS Ch. Bi-Mar Sundance Kid**, some of these puppies will be for sale.

— Multiple Best In Show, Champion Bi-Mar Sundance Kid is now the number one sire, 1986 —

## BI-MAR POMERANIANS

MARY A ROSENBAUM

Phones: 206-838-6397

206-927-2369

36520 28th Avenue South

FEDERAL WAY, WASHINGTON 98003

Some time back **Sally Baugniot** told about the dinner cruise sponsored by the Specialties, and I'm sorry to have missed it because I love boats. I have always loved boats, and probably always will. And that was the reason I signed the contract to perform for the *National Bank of X*.

Now, at that time my band was sufficiently popular to work as much as we wanted, and yet poor enough to *want* to work as much as we could. Booking agencies knew we would always do a fine job, and yet were often agreeable to unusual requests. On a gut feeling I took a 30 day gig at a Country Club in a midwestern town too small to be on the map - I don't know why, I just did. The band threw a fit - I mean, how much fun was there to be had in East Walnut or whatever? I stood firm - after all, I was the boss. It turned out to be 30 of the most enjoyable days (nights, actually) I have ever spent, with extremely gracious people in a beautiful setting. So, often I was game to take a gamble.

One time I booked us into a fashionable ski resort...off-season. There were maybe 12 people in the 700 room hotel, but they were all very nice. They were also all Japanese and only one of them could understand a word of English. They just sat there and smiled. That was fine, too - they were an attentive audience and never knew that one night I hashed up the lyrics to *I Get A Kick Out Of You...*

And speaking of kicking and singing reminds me of ***The Night Betty And Bertie Hit The Dance Floor***...literally. Betty and Bertie were - and apparently still are - my two biggest fans. (Betty called about a month ago and asked to have another copy of a demo tape I had made - hers was worn out! I had a notion to tell her so was I.) Anyhow, for a 2 year period Betty and Bertie showed up at every first-nighter within possible driving distance. They somehow made it into numerous private clubs - how they did it, I don't know - but there they were. Now, a little background. Betty was tall, slim, strikingly attractive, in her 60's, and held down a very responsible position during the day. But at times she could be *wild*. Bertie was petite, pretty, the top realtor in her area, was 60 plus with the body of a 30-year-old. And, at times, the mind of a 12-year-old. The Night was one of those times.

Betty and Bertie had polar interpretations of the art of terpsichore. Bertie was of the Shimmy School of Dance, and Betty was trained in Dramatic High Kicking and Spinning With Arms Outstretched. Many were the nights that Betty would launch a shoe skyward and only stop to retrieve it when the band went on break. As she wore 3-inch heels this lent a rather disorienting effect to her whirls and twirls, causing dizziness and nausea in spectators. And of course Bertie always danced with complete abandon, often resembling a blender on PUREE. But those were only normal nights with Betty and Bertie. One night they *really* got wound up.

Now, this was a very nice club. Everyone dressed beautifully, ate politely, drank judiciously, and behaved properly. Or normally they did. But this was Betty's birthday, or Bertie's birthday - I can't remember. Betty and Bertie were the picture of class up to the last - in stunning gowns, their hair perfect, makeup exact, and many of the younger wives in the audience were jealous of the attention Betty and Bertie were getting from the men. But onstage I had a



strange feeling of impending doom...like something awful was about to happen.

And as usual I was right. After, apparently, two too many toots of Drambuie, Betty and Bertie went into high gear. "*Let's go, Joe Baby!*" they hollered, and feeling mischievous, I swung into my signature up-tempo version of *Summertime*, segued into an incinerating *Heatwave*, and then pulled out all the stops. The floor was packed - everyone was jiving. As my bassman

hit the booming backbeat intro to *Shame*, I caught my breath and surveyed the scene below. And this is where it all fell apart.

Betty hit the floor with a dynamic spin, arms outstretched, and as she turned she smacked four people in the face. One man's glasses flew onstage. I planted the mic and stopped to retrieve them. Just then Bertie went into a wiggle so intense that she fell right down to her knees. I jumped offstage to help her back up. She threw her arms around me in appreciation or something and, as I was off-balance at the time, we fell into two other couples who in turn created a domino effect which echolocated through the sea of people on the dance floor, eventually upsetting champagne buckets at three ringside tables. I jumped back onstage - things were getting out of hand. I decided to quickly move into *Evergreen* by which to convey love and romance to the frantic dancers and, hopefully, bring them back to some semblance of order. As I signaled my keyboard man I glanced down...and here came Betty, paring the dance floor with high kicks as Moses had the Red Sea. I stared in awe; each kick went higher and higher. The crowd cheered her on; she threw back her head: it was a sight to behold.

But then Betty went for the Ultimate Extension. She wound up, kicked as hard as she could, and...with the centrifugal force associated with extremely powerful movement, Betty's whole body left the ground. She seemed to levitate for a moment and, in slow motion it seems, arms reached toward her, I jumped down onto the floor, someone screamed, and Betty landed with a *SPLAT*...flat on her back.

Imagine, if you will, an ironing board standing on end. Push it. The impact you imagine as the board hits the floor pales in comparison with that of Betty's back meeting the parquet.

She was lying very still. My heart stopped and so did the music. I ran to her side to see if she was still alive. I called *Betty! Betty! Speak to me!* Her eyes flashed open and she yelled, "*Let's Go, Joe Baby!*"

Betty and Bertie repaired to the Ladies' Lounge. I repaired to the stage. The others repaired to their tables and the staff repaired the damage. As we moved into a hauntingly slow rendition of *Once In A While*, I thought to myself, *Well, no matter what, this is better than the time we played for the National Bank of X.*

But that's another story, for another day. Until then, I hope you are in tune, that your dance card is full, and that you always remember...**POMS AWAY!**

With love and thanks to Betty and Bertie. JMCG

# Glen Iris Pomeranians

presents a new classic...  
**Glen Iris Ivanhoe**



★ **Best of Breed** over specials, handled by **Angela Curtis & Joel Taylor**. Thank you **Mr. Robert Sharp!**

★ **Best of Breed**, Mississippi Coast KC, handled by **Hiram Stewart**. Thank you **Mrs. Frances Thornton!**

★ **4 Point Major** from the Bred By Class, Atlanta KC. Thank you **Mrs. George J. Wanner, Sr.!**

★ **Best of Winners**, Columbia KC, handled by **Ann Terry**. Thank you **Mr. Frank Oberstar!**

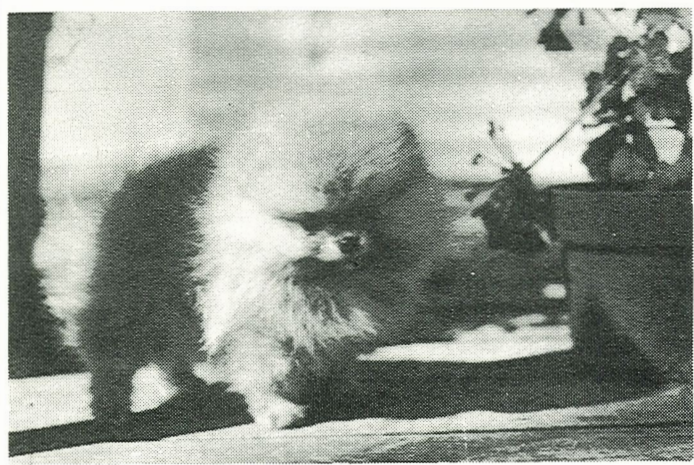
**"Ho Ho"** has matured into a clear orange, 4 pound male with a glowing personality and a feisty attitude! Since we just can't bear to have him gone for long, he will be shown close to home by **Glenn & Rebecca Lyan**. Watch out for HO HO!

**Cheryl A. Jackson**  
**Joel M. Taylor**

1038 16th Avenue South  
Birmingham, AL 35205

(205) 328-6603

# CHESAI POMERANIANS



**CHESAI PLAYING FOR TIME**  
Handled by **Ron Feyh**  
— 9 points to date —

Robert & Joan Reilly  
(512) 438-2667

26093 Highway 281 North  
San Antonio, TX 78260

## The Cajun Comes to Kansas & LLL Kennels



**CH.\* TIM SUE'S HIGH LIGHTS** taking BOB under **Fred Young** at St. Charles KC. \*Pending AKC confirmation  
**Group I** at Scottsbluff KC, judge **Charles Mulock**  
**Group IV** at Central Wyoming, judge **Mildred Bryant**  
Breeder/Owner **Sue Goddard**  
Co-Owner **Janice Luginsland**

*HIGH LIGHTS* puppies on the ground soon!  
**LLL KENNELS, Janice Luginsland**, Rt 1, Box 97, Americus, KS 66835. 316-443-5157

# VIEW POINT

## VICTORIA POWELL

### *Better Homes and Kennels*



About six months ago I was visiting with Peke breeder **Mrs. Tuula Damon**, who showed me some photos of a kennel layout of someone who had purchased one of her dogs. The kennel set-up and its lovely bright colors and cheery appearance prompted me to contact the owner and ask her if I could present her ideas to the Toy fancy through this magazine. She eagerly accepted my offer, asking only that I wait until all construction was completed before featuring it. Well, construction is now complete at the kennels of **Chateau St. Colbern** in Kent, Washington, owned and operated by **Mrs. Colleen Straight**. Mrs. Straight breeds only Pekingese, but her kennel plans may be of interest to any Toy kennel owner. So here, through pictures, descriptions and the blueprint, we bring you the complete layout of Chateau St. Colbern.

The kennel building is of wood frame construction on a four inch concrete slab floor. The exterior walls and ceiling are insulated with R-11 fiberglass batts. The clear-span roof trusses are sheathed with ½ inch CDX plywood and covered with fifteen-pound felt paper and 3-tab fiberglass shingles. Rain water is collected in plastic gutters and downspouts. The exterior of the building is finished with horizontally applied ½ inch beveled cedar siding, primed and painted with exterior house paint. The windows are one-inch insulating glass set in anodized aluminum frames.

The interior walls of the kennel are finished in ½ inch hi-density particle board applied with a "V" groove butt joint. The material is then well primed and painted with two coats of lo-gloss enamel. The cubicles are constructed of four by eight by sixteen-inch, fifty percent concrete/pumice block. The mortar joints in the block are tooled in a concave fashion and the tops of the block walls are filled and smoothed so as not to leave any rough edges or joints. The block partitions are then filled with a block filler in preparation for two coats of semi-gloss enamel. The cubicle gates are constructed of ¾ inch AB grade finish plywood with each gate having two spring loaded self-closing hinges with two rubber bumpers installed at the closing side of the gate to reduce the noise of banging gates. Only the outside surfaces of the gates are painted with two coats of enamel. We have found in the past that if the gates are painted on the inside the dogs, as they jump up, soon scratch them and they no longer look neat; unpainted they look fine. The entire kennel is illuminated with fluorescent strip lighting fixtures.

The grooming and prep room is furnished with plastic laminate cabinetry. The food preparation portion of the counter is at thirty six inches above the floor, while the bathing and grooming counter is at thirty two inches above the floor. The floor covering in this area is seamless sheet

vinyl. The concrete floor coating in the areas where the dogs are housed is a three coat application of non-skid epoxy deck and patio enamel. This floor coating is very scrubbable and easily maintained.

The source of heat for the kennel originates in the grooming and prep area with a fully automatic, vented to the outside, fan driven kerosene furnace. The heat is distributed through the kennel with three variable speed fans mounted six inches below the ceiling height. The fans run constantly, night and day, whether it is during the heating cycle, air conditioning cycle, or when neither system is operating, as our weather in the Pacific Northwest can be quite mild at times. With the fans operating continuously, positive air circulation promotes a fresh clean kennel.

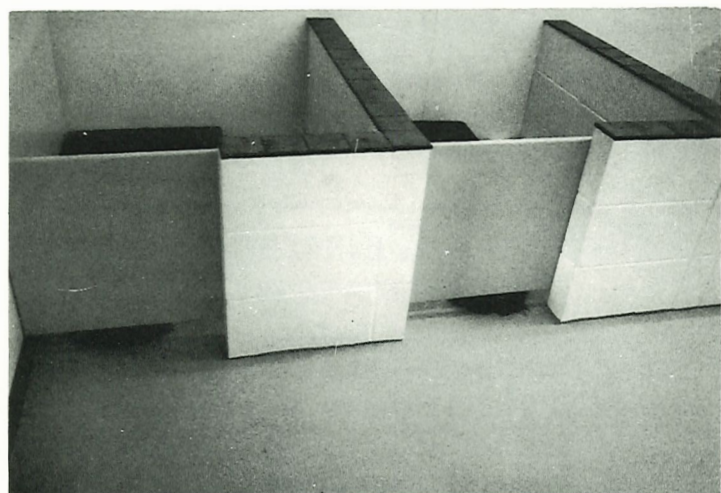
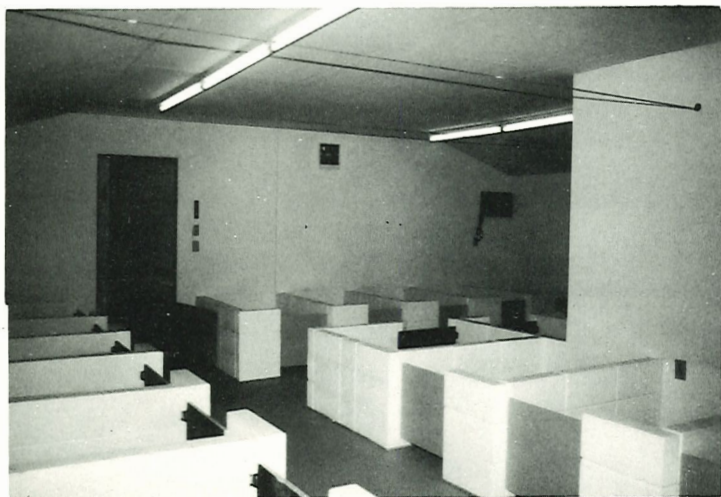
The exterior run and exercise area is constructed of 1½x8x16 inch concrete paving stones placed on a base of four to six inches of self-draining granular fill material. In our experience this is a very important feature over a monolithic concrete slab that will not dry quickly after washing or during winter weather, where as with the jointed pavers the water quickly drains through and the area dries much sooner. There is a large retractable hose reel with a 5/8 inch hose and spray/mixer attachment for daily washing in this area, daily washing with a good sanitizer/deodorizer keeps the outside runs clean and fresh. The run area was intentionally constructed on an incline so as to provide additional and much needed exercise for the dogs. The run and exercise area is enclosed with a thirty-six inch high galvanized chain link fence with interior mobile sections to separate the gals from the guys at that time of the season. The top is covered with corrugated fiberglass panels. Rain water is collected in gutters and downspout and drained away from the area; in this way dogs can be out in all types of inclement weather.

*Continued next page...*



### View Point by Victoria Powell continued...

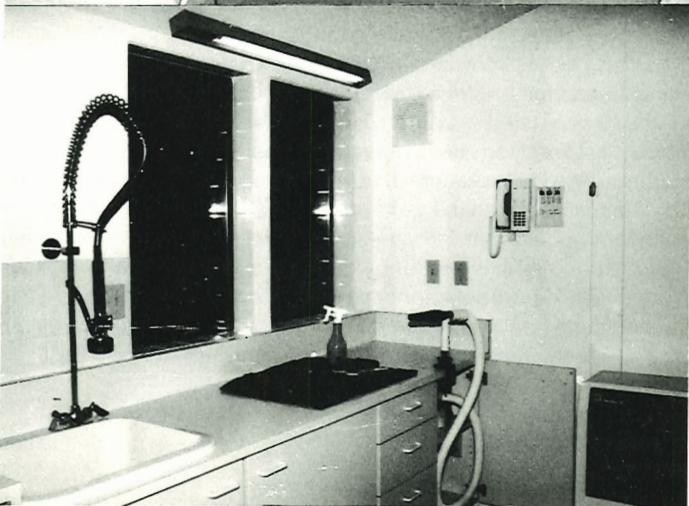
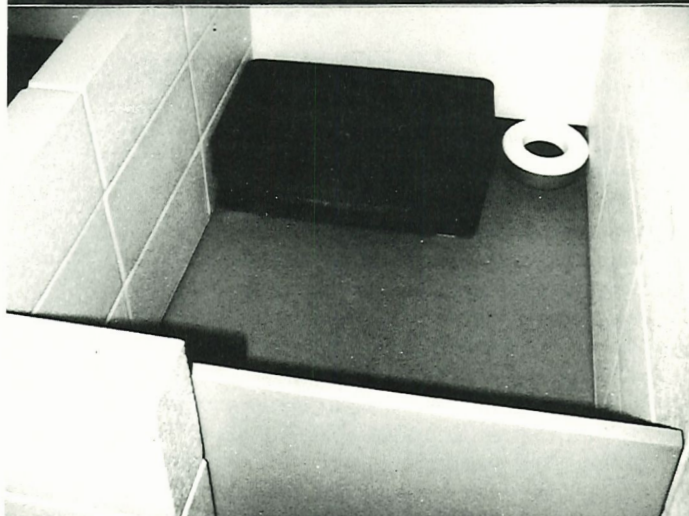
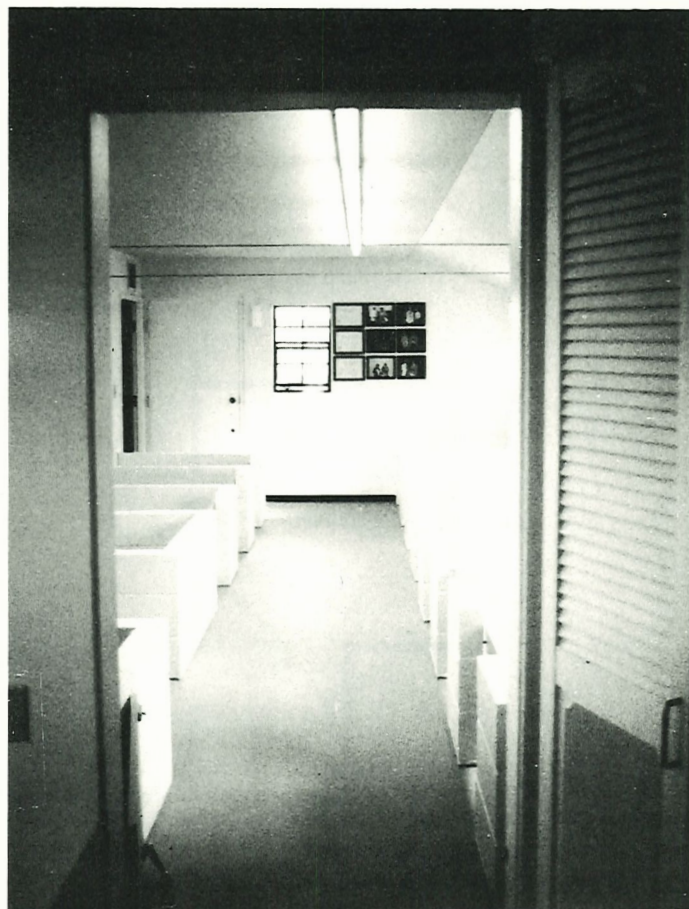
The kennel is entered from the patio area of the main residence, directly into the puppy kennel. This area is outfitted with eight 3x4 foot cubicles. Each cubicle easily accomodates two youngsters up to about nine months of age. There is a storage closet in this area with sufficient shelving to hold all bulk purchased kennel supplies.



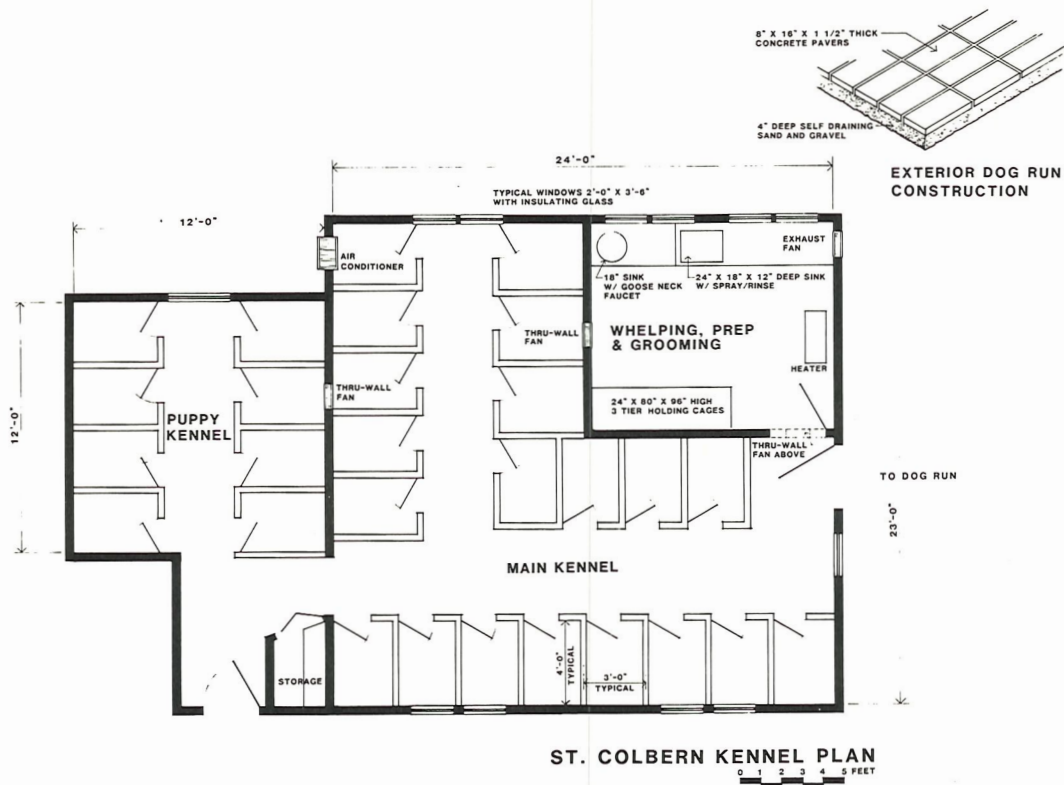
The main kennel is entered from the puppy kennel. The adult dogs are housed here, separated from the puppy area by a gate to keep the adults from journeying into the puppy room on their way to and from the exercise yards. As you will note from the photos, this kennel does not have indoor-outdoor runs which necessitates the daily handling of all dogs to allow them to go outside. The main kennel can house 20 dogs. Each of the 20 cubicles measure 3x4 feet and are equipped with a metal bed elevated slightly off the floor. The beds are fitted with a down-filled cushion with a washable cover. The dogs are watered by means of a "Waterhole" bowl and also each have their own favorite toy within their enclosure. The main kennel has access to the outside exercise yards and the dogs run to and from the yards themselves.

The Whelping, Prep and Grooming room is entered from the main kennel and this room seems to be the main center of activity for Mrs. Straight. It is well equipped with cabinetry and also includes a large, deep sink with a sprayer attachment for bathing, correct height counter space for grooming, lots of overhead lighting, a built-in "Cool Dry" hair dryer with easy access, and an exhaust fan. There is an under-counter refrigerator and a self-dispensing wall hopper containing dry food. All food preparation takes place in this area.

**Continued next page...**



**VIEW POINT by Victoria Powell continued**



**ST. COLBERN KENNEL PLAN**  
0 1 2 3 4 5 FEET

**Blueprint for the Chateau St. Colbern Kennel**

The whelping pens in this same room are designed to hold a bitch during the later stages of pregnancy, during whelping, and throughout the nursing period. Litters may also be kept here after the mother has returned to the main kennel, at least until they outgrow their enclosures. These cages may also double as sick bays if needed, as they are high-grade veterinary hospital-type cages.



The outside exercise area is about 16x30 feet. The actual surface on which the dogs run is covered with concrete paving stones laid on a base of self-draining granular material. This surface is very porous and though not as inexpensive as gravel, it is wonderful for its quick-dry capabilities. This is especially valuable with coated breeds living in damp or humid climates. Mrs. Straight asks that readers please note the highway traffic cones which her Peke boys love to anoint! They are visible in the following photos.

The thing about this kennel that really caught my interest was its overall cheeriness. Unfortunately these photos are in black & white, but the kennel itself is painted bright white with glossy yellow accents. It is lovely to view and since I believe dogs enjoy beauty as much as we do, I wanted all of you to have a chance to see it.

I extend my thanks to Mr. and Mrs. Straight for the time they took working with me to develop this article. Also, at this point I would like to ask any readers who have or know of an innovative or especially different kennel design to please contact me through the magazine and we'll cover it in a future issue. Perhaps we could have thrice-yearly coverage of great kennel ideas for Toys.

Until next month, here's to happy Toys!

**Vikki**

**Doo-Shay Pomeranian Palace**  
**CH. JIGGER AND CH. SABRA**



These are the latest champions here at **Doo-Shay**. **CH. LLL BIT O GOLD JIGGER** who finished in just 7 shows, blew coat and will start again the fall. **CH. DOO-SHAY'S HOOLIGAN SABRA** who will be staying home this fall taking care of her youngsters.

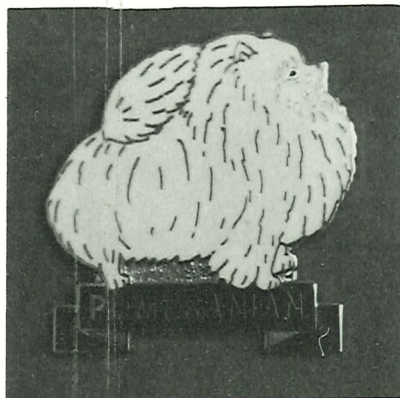
*Several Litters of excellent quality are for sale at reasonable prices.*

**Shannon Johnson**  
6270 Tripp Road  
Holly, MI 48442  
313-634-1331

# JLS

## Animal Specialties

### Pomeranian Lapel Pins



Exclusively designed in Cloisonne. A Choice of Cream, Black & Tan, or Red. Great for Prizes or a profit maker for your Club. Discounts given on orders of 25 or more pins. Price: \$5.00 plus \$1.00 for shipping and handling on 1 to 10 pins.

SEND CHECK OR MONEY ORDER TO:

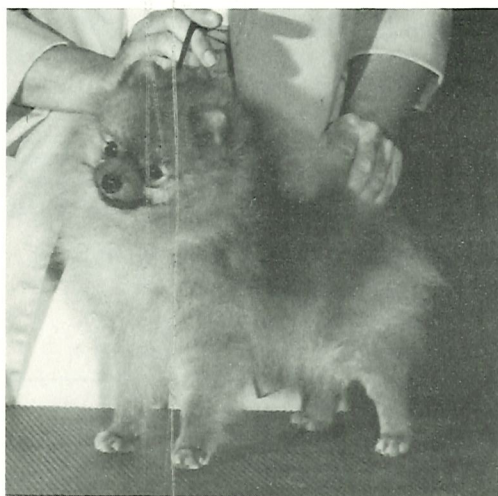
**J.L.S. Animal Specialties**

4102 NEZ PERCE

COEUR d'ALENE, ID 83814

PH. (208) 765-8518

## Patty's Pomeranians



### Ch. Patty's Do It For Dude Sputz

"Sputzie" finished her championship in remembrance of her namesake grandsire, **Ch. Camelot's Bashfull Dude**. She is my third homebred champion, my fourth owner-handled champion. **For sale:** male born 1/15/87, sire **Ch. Patty's Dinomite of Bren-Ray**.

**PATTY'S POMERANIANS, Patty Jensen, 6520 Game Farm Rd. E., Mound, MN 55364. (612) 472-5950.**

## J AND M'S POMS-R-US

Formerly J & M's Prestigious Pomeranians

**AND NOW IT BEGINS!!**



### J and M's Jole Wee Coltessence

On her third time in the ring, Tess is shown going **TOY GROUP I** on 6/28/87 at the Golden State Dog Fanciers All Breed Match. Her accomplishments to date also include:

★ **BOS** 6/14/87, Purebred Dog Council of So. Ca. All Breed Match (first time in the ring).

★ **BOS** 6/21/87, Match and Show News All Breed Match (second time in the ring).

Tess is our first attempt at show breeding and is owner handled.

**Mary & JJ Marchbanks**

4986 Avila Way, Buena Park, CA 90621. 714-994-0259

## Lenette Pomeranians

Breeders of fine Poms since 1957

4345 Rogers Lake Road • Kannapolis, NC 28081

Phone: (704) 938-2042

**K. G. GRIFFITH, owner**



**Ch. Beaver of Lenette**, 4½ lbs. red standing at stud for \$100.00. Sired by **Ch. Model's Timstopper's Echo**.

**FOR SALE:** Proven matron - Black & Tan, raised one litter of 5 puppies. Very young.

Top show prospect male - Black & Tan. 7 months old. Show home only. Sired by **Great Elms Tar Baby**.

Three show prospect males - orange, 2 to 3 months old. Sired by **Ch. Great Elms Li'I Man of Lenette, Ch. Wood's Magic Masterpiece, Ch. Coy's Top of the Mark**.

Puppies almost always available from our four champion studs as well as from other to studs. Priced from \$200.00. Almost all of our Poms are from the **Great Elms** line.

# GENERALLY SPEAKING...

by Susan Wade

With the actual temperature of 91 degrees and the heat index at 106 degrees, I try to think of "cool" things - a huge frosty pitcher of lemonade, ice cream sundaes, mountain streams running swiftly, the water in sparkling lakes...or snow. The last time I saw a real snowfall was in 1974 when I made my first trip to the Garden. Oh my! Was there snow!!

We left Florida, bound for New York during the gas shortage - remember that? Two professional handlers, a young lady of about twelve, six Miniature Schnauzers, four Miniature Poodles, four Yorkshire Terriers, two Maltese, one Smooth Chihuahua (named Zsa Zsa), one three-month-old Schnauzer puppy (named Solo) and me. All neatly packed into a 30 foot motor home and bound for Long Island!

Fortunately, the gas shortage didn't give us much of a problem and we were able to fill both gas tanks on the motor home before we climbed onto the New Jersey Parkway. Feeling very lucky, the driver decided that we would use only the gas in the front tank, so when it began to get low, off we went to fill it up. We pulled into a gas station in fine style, prepared to put in whatever amount they would sell us. Would you believe that they would let us have only \$1.00 worth of gas? That's right - and our toll ticket was marked, so that the only way we could buy another \$1.00 worth was to get off the NJP, pay a toll, get back on and buy gas at the next station! We thought that was pretty stupid, but what can you do? On we went, but by the time we were off that charming toll road, we were well into the back tank of gas. We did manage to get to Long Island, though the gas was a bit low...but we were there!

The next day (which happened to be my birthday) was spent at the Specialties. One handler and the little girl did the Yorkie one, and I went off with the other handler to the Terrier Specialty. I have memories of holding Schnauzers on grooming tables in a huge, drafty armory! A monstrous tarp had been hung across the inside of the entry (a large overhead door). This thing would billow out every time anyone wanted in. In an effort to further break the breeze, large tarps had been stretched over frames that were placed at intervals which left a rather zig-zag path, with the grooming in the areas "protected" by the tarps. It was different, I had to admit, and somewhat of an adventure to thread your way to the rings!

That night were the dinners, etc., so I was rather looking forward to an evening of peace and quiet after the dogs were fed, exed, and put to bed. While we had been showing the dogs, the snow had started and the temperature was beginning to drop. We had left the motor home on Long Island and all the dogs there were comfy and warm. We took care of things and the handler, the client, and husband left for the dinner. I have to admit it was very peaceful, sitting in the motor home and looking out at the snow - just like a Christmas card!

My "Christmas card" scene took on a different aspect when the circuit breaker in the house "broke" and there was no electricity in the motor home. Resourceful me - turn on the generator! Bright idea, but the generator wouldn't turn over - not even after

The Pom Reader / August 1987



several tries. I had been so wrapped up in my "peace and quiet" scenario that I didn't realize the temperature had dropped to 10 above 0! No propane for the oven either. Also, the house was locked and equipped with a burglar alarm.

As the cold began to seep in, I shredded every newspaper I could find and filled the dog crates, covered the crates with blankets and crawled into a sleeping bag. At about ten o'clock, the Chihuahua and the puppy were beginning to fuss and I was beginning to feel a bit on the cool side. At this point, I found another sleeping bag, stuffed mine inside it, took Zsa Zsa and Solo and crawled in. Zsa Zsa immediately curled up behind my knees and Solo took possession of my chest. About midnight, all I could think about was that house just across the driveway and about how warm it must be inside (even with the heat turned down), and how nice it would be to have a cup of coffee (I could even smell the coffee). I began to devise ways to get into that house - all of which involved being descended upon by the police, of course. At about one o'clock, I made a decision -- I was going to break a window and get into that house - at least then I wouldn't be alone...and the police cars were sure to be warm!

I was saved from a night in the police station by the arrival of the handler and clients returning from the dinner! The client's husband (an MD) dispatched me to the house for a warm, soaking bath, breakers were flipped, heaters were turned on, shredded paper removed, dogs checked and all declared well. I was bundled into a robe and seated before a fireplace with the biggest cup of hot chocolate anyone could imagine. When I glanced out the window at the newly fallen snow, it again resembled a Christmas card.

You would think that this was enough to make me remember my first trip to the Garden, but you should have seen me two nights later, with two Yorkies in crates, and an X-pen...on the Long Island Railroad trying to make a change in trains so I wouldn't end up in the Bronx instead of Long Island! □

## MILLAMOR

ELEANOR & KEN MILLER

5426 Spring Lake Drive

Lakeland, Florida 33803

Residence Telephone (813) 646-5864

## Janesa's Poms

Jerrie Freia  
P. O. Box 2775  
Morgan City, LA 70381  
504-384-7466

## TIM SUE POMERANIANS

Come see us ANYTIME in our new home!

TIM & SUE GODDARD

Route 2, Box 540

Opelousas, LA 70570

(318) 543-6622

# POMERANIAN CLUB OF MICHIGAN SPECIALTY

In conjunction with Kalamazoo Kennel Club



Judge Mrs. Barbara Jarmoluk awards Best of Breed to *Am. Can. Ch. Millamor's I'm A Windjammer* owner handled by Jeanne Stafford.



Winners Bitch, Best of Winners, Best of Opposite Sex *Watter's Tiny Touch O'Amber* owned by Rollie & Evelyn Conley.



Winners Dog *Windjammer's Night Ranger* owner handled by Jeanne Stafford.

## JD'S POMPOUS POMS

Home of CH. CIRCLE M COMES A HOSSMAN

JANET HOVEY, 34856 Acton Canyon Road, Acton, CA 93510.  
(805) 269-5575

## Desiree's Poms

DESAREE SANDIFER

509 OAKDALE STREET, GASTONIA, NC 28054  
TELEPHONE: (704) 865-0859



## Apolloette Pomeranians

Marlene & Marlin Presser

(209) 886-5561

21789 E. Hwy 4  
Stockton, CA 95205

## BANDBOX

Ch. Stud Service in Orange, Cream & Red Sable  
Puppies and Adults Occasionally

NANCY & DEFOREST BARTHOLOMEW  
Rt. 1, Box 182, Ola, AR 72853  
501-489-5733

## SHILOH KENNELS

Great Elms, McKamey lines

Breeding Quality Puppies

Ron & Phyllis Suby, R3, Box 178, Forest City, IA 50436. (515) 582-4553

## Golden Aires Poms

Offers for sale, 1 orange sable male, whelped 7/6/86, well on his way to his championship with 7 points including a major. Pictures and pedigree furnished upon request. Sharon Masnick, HCR 65 Box 745, Huger, SC 29450. (803) 928-3511.

## WINDJAMMER...

**The Poms With Pizzazz!!!**

(Sorry - nothing for sale until spring!)

Bob & Jeanne Stafford  
616-683-0214

1231 Carberry Road  
Niles, MI 49120

## American Champion Pedigree Service

Pomeranians are our specialty. Exquisite, frameable parchment. 4 gen.: \$7.00; 5 gen.: \$10.00; 6 gen.: \$16.00; 7 gen.: \$32.00. Rolled: \$2.00. Shipped in beautiful frame: 4 gen.: \$5.00 extra; 5 gen.: \$7.00 extra. Send copy of registration.

10115 ALLENDALE ROAD, WOODSTOCK, IL 60098

# Ask Shu-Shu!



Dear Readers:

After hearing the good and the bad of air shipping us kids from state to state, I thought I should give my astute opinion on the subject. Frankly, I don't understand all the ruckus. Hey kid, if ya gotta go, ya gotta go. *BON VOYAGE!*

It takes an extraordinary canine like me to stay behind and not ever be shipped anywhere. However, it's not the end of the world if you are chosen to leave your present environment and fly the friendly skies. Well, if the engine fails if your airplane gets show down by an enemy craft or something of this sort...

Make the most of the trip. So what if you have to be at the airport at 5:30 a.m., two to three hours prior to takeoff. You can amuse yourself and others by whining, barking, howling or scratching just for the attention while inside your HOT little crate. WATER? Sorry, little one, remember what the airlines said? "I'm sorry, lady, your dog cannot have any water as they become sick from it on the flight." I say, don't despair, take something else along with you. Personally, if it were me, I'd take along my favorite thing...ice cream! Just store it in the back of your new "traveling home". I say "traveling home", cause you may be forgotten about and have a longer trip than expected. Don't worry, by the time you get to your destination, you won't want to come out of that crate. You get used to the four walls closing in on you and chewing on those "bars" on the gate for entertainment.

Remember, DON'T GO POTTY! You can't blame it on water spillage, cause you never got any water in the first place. Are you having fun stuffed in the same stuffy room with all the baggage? You and all those other little fellows are now called BAGGAGE. I've heard of other names, but BAGGAGE? That's the worst!

It won't be long now, with the soaring heat and high humidity. One way or another, your trip will be completed. Bet you are dying for that cold drink of water, but never fear, after the aircraft touches ground and you are taken off the plane and placed on the ground for a few hours while waiting for your next ride into the cargo department, you will get cooled off quickly alright in the severe thunderstorm and high winds. The attendants will get you in a minute. First things first...maybe you will be next on the little transport wagon after the canvas tent. Your turn is coming, trust me. Finally, you made it inside the building and your anxious new mom and dad immediately pick you up. You of course initiate them

The Pom Reader / August 1987

right then and there, after all you have been flying around the world for the past 10 hours and couldn't hold it any longer. That's okay, if you go for one more ride, you're in! This is the most enjoyable ride of all. HOME. On a soft, warm, loving lap.

Well kid, you had to go and I'm proud of you. You did it. Oh, just another pleasant thought from your monthly PR columnist. When you grow up, you will be able to fly again and soon thereafter, you will be a proud mama.

Guess air shipping is worth it at times. *BON VOYAGE.* Looking on the bright side of things, I remain,

Positively yours

SHU-SHU



**john e. heartz**

PROFESSIONAL HANDLING IN CANADA  
"POMS" A SPECIALTY  
P.O. BOX 1259, TRURO, N.S. CANADA  
PHONE (902) 895-7427

## La Cherie Pomeranians

Breeding for a better Pom-morrow  
Great Elms, Precious Petite's, Showstopper Lines

Dorothy Martin  
Rt. 2, Box 30M, Rock Hill, SC 29730  
803-377-7718

## POM ACRES STUNNINGLY SABLE



Shown receiving a 4 point major from judge **Michelle Billings** at Lake Minnetonka K.C. **Sable** also received BOB's under judge **Elaine Mathis** and judge **Alfred E. Treen**. Thank you judges and a special thank you to **Lois Martin** for her fine handling and care she gives **Sable**.

## Pom Acres Kennel

R.R.4  
Cedar Falls, Iowa 50613  
Robert & Juanita Fiddick Tel: 319-989-2199

# Down Memory Lane...

## By Elva (Cohen) McGilbry

*So many happy memories!* I was an only child and my parents maybe spoiled me a bit. I grew up on the Lewis River in Washington, in the foothills of Mt. St. Helens. Such a beautiful mountain before the eruption. My first doggy pet was a little fox terrier type. I can remember the dusty road Mother and I walked (about a mile) to get my little girl dog. She was a wonderful little pet. I must have been about five years old then.

My Mother and Father were born and raised on the Lewis River, too. They were schoolmates. I had a riding pony and enjoyed riding the old roads and seeing so much wildlife. Years do pass and I was up to a teenager so soon. I played basketball through high school. Happy days!

In 1933 I married Mr. Cohen, a wonderful husband. We traveled a lot seeing our country and enjoying ourselves. I was ill for awhile and confined to my bed. I wanted a small dog to be with me all the time. We looked around kennels in Portland and saw some Poms...finally decided on a pretty male bred in Michigan. He was so intelligent; never had a lead on. We had a restaurant and my "Pommie" knew everybody.

One day I rushed home to get something, and of course he was with me. I left him outside and I think he resented that. Anyway, he saw another dog and rushed across the street. A car hit him and killed him. I really was in shock. My husband went out to find me another pet. This time it was a very beautiful Orange Wolf Sable. She matured almost four pounds. I now realize just how good quality she was; huge coat, high tail set, all we want in a show dog.

A friend of mine from San Francisco came by one time and was going on the Idaho circuit. She wanted my female to build points for her female, so she could finish. When she came back she handed me a handful of ribbons. *My baby had won them!* One show she won was Sun Valley Idaho - I believe the only show ever held there.

My first show I went to I showed her son in Portland, Oregon, and he won. That was about 1938...you know, the bug bit me right there. I always showed my own dog and went to shows in California, Oregon, Washington, Idaho, and Canada making American and Canadian Champions. So many good friends from the shows. My very best friend of many years is **Pauline Hughes** of California. We went to many shows together. For years I spent half my time with Pauline and half at home.

When I lost my first husband I lived in Vancouver, Washington. At that time I judged shows all over the U.S. and Canada. The highlight of my judging career was judging *Del Monte, California*, and the then famous *Morris & Essex* show.

The **Golden Glow** kennel name came to me when I saw a billboard advertising *Golden Glow Beer* - to me it fit my Poms. My Champions lived with me until they died of old age.

In later years I remarried. It was in 1960 that I married an exhibitor of German Shorthair Pointers: **Vance McGilbry** was a professional handler so I had to give up judging. We had many, many happy show trips.

I've enjoyed a full life as an exhibitor, breeder, and judge. I've been President of an All Breed Club for several years and also President of a Pom Specialty Club.

Our twilight years have caught up with us...we're both eighty years old, but we still have our pets. □

### RAIN BEAU POMERANIANS

Home of:

**American Canadian Ch. Coy's Lucky Eight**

At stud to approved bitches

Jean (Sue) Cook

6810 S. Magnolia, Ocala, Florida 32676

(904) 237-1636

### ICERAMA POMERANIANS

Skip Piazza

THE KENNELS

527 B Church Road

Avondale,

PA

19311

215-268-8000 or 215-268-2266



Ch.  
Stud  
Service

Breeder/Owner

**CLAUDIA PFEFFER**

P.O. BOX 10432

Jefferson, LA 70181

(504) 737-1729

*Precious Petites*

### DOVER-HOLIHOUSE



**Dover-Holihouse Kris Kring-L**

Dover-Holihouse

**Kathryn Hartz**

319 Ardmore Avenue

Trenton, NJ 08629

609-695-1642

# UPDATE

## TOP TEN EXHIBITORS

### AS OF THE JANUARY - JULY 1987 AKC GAZETTE

Welcome to UPDATE, your monthly rating list of breeders and exhibitors out there winning points in the show ring. As most all serious Pomeranian fanciers are, in one way or another, involved in campaigning their Poms for AKC Championship points, we feel that it is important to keep tabs on the Pomeranian doings in this area.

The procedures for tallying the point scale are as follows:

The source for all points is the official show awards book of the AKC Gazette. Only this publication will be used for point credits. Exhibitors are credited with all AKC Championship points won in the Gazette year, and published monthly according to appearance in the Gazette. As keeping track of each and every AKC show in the United

States is an onerous task (accomplished diligently by AKC), many times the actual show dates will vary from the date of publication (i.e.- a September show may not be published until December.). The Gazette year, as a rule, runs from about November of the previous year until September of the present calendar year.

Points are allotted to **THE REGISTERED OWNER OF THE DOG AT THE TIME OF COMPETITION.**

Statistician: Susan Wade. Any questions concerning UPDATE may be addressed to the editor.

**THE FOLLOWING IS THE LISTING OF THE TOP TEN EXHIBITORS JANUARY thru JULY 1987 AKC GAZETTE.**

#### EXHIBITOR.....POINTS

D. WATTS.....	48
L. VASUTA.....	38
C. & R. READY.....	35
L. BRYSON.....	33
B. MCDONALD.....	32
P. HENDRICKS.....	30
L. COLLINGS.....	*28
N. MCKAMEY.....	*28
L. EJCHORSZT.....	*27
A. & G. GONOS.....	*27
PIAZZA/MARCANTONIO .....	*27

\*Tie: placements alphabetical

*The Pom Reader*

Your Showcase for Purebred Poms



**BEV-NOR POMS** - home of *Ch. Bev-Nor's Toasted Fudge* (#1 Pom for 1981, 1982, 1983, 24 BIS, 5 Specialties, sire of top winning females in 1984, 1985, sire of *only Black & Tan to ever go BIS*. Stud Fee: \$200.00 - limited to 20 bitches per year. *Ch. Theldun's Almond Fudge* - sire of **33 champions**, BIS, Group, & Specialty winners. Stud Fee: \$250.00 (limited to 15 bitches per year). *Ch. Bev-Nor's Statesman* - multi Group winner, 1986 Best in Sweepstakes winner NYC, Stud fee: \$200.00. 6 August litters due, several repeats. **BEV NORRIS**, 7747 Meadow Road, Pasadena, MD 21122. 301-255-1343.



### EMCEE'S POMS

★ Show puppies available  
★ Stud service on: *Ch. Emcee's Solid Gold Prince*, son of *Ch. Great Elms Prince Charming II*. Fee: \$250.00.  
*Morris & Betty Carson*, 9826 Waltham Drive, Richmond, VA 22323. Ph. (804) 740-7977.

### ★ PET PILLOWS ★

Fragrant, cedar chips stuffed. Repels fleas and ticks. Removable, washable, pile, cream color cover- 19"x16" - \$14.00; 19"x23" - \$16.80; 28"x24" - \$21.50; 29"x35" - \$26.00. **Postage Paid.**

**Mary Ann Wellnitz**

RR 1, Box 86, Rushville, Nebr. 69360  
Tel: 308-327-2533

*Sanrrito's* **CH. BONNER'S LEGACY GOLDEN DRAGON**  
Owner/Handler  
**SANDRA TERRITO**  
P.O. Box 33  
Lakeland, LA 70752  
Tel: (504) 627-5200

### Offers At Stud

**CH. BONNER'S LEGACY GOLDEN DRAGON**

Owner/Handler

**SANDRA TERRITO**

P.O. Box 33

Lakeland, LA 70752

Tel: (504) 627-5200

## KHANI

### RAINBOW POMS

**Byron & Connie Hendricks**

P.O. Box 644, Arcadia, CA 91006

Tel: (818) 444-5131

*Chūla*  **KILLER**

AND ALL THOSE GORGEOUS GIRLS

**NORMA C. GAD**  
(915) 584-0942

5908 Westside Road  
El Paso, TX 79932

— *Jeribeth Pomeranians* —

"WITH PLANNED PARENTHOOD"

**DARRELL & OLGA BAKER**

207 Shirleen Drive  
Seabrook, Texas 77586  
(713) 326-2250

### JUSTA POMS presents

#### CH. JUSTA MENEHUNE

producing 80% females - watch for his winning daughters at the shows

and **AUSTIN'S A KNIGHT TO REMEMBER**

Heavy coated black - sire: *Ch. Shadra's Battery Not Included*

**SHARON HIEMENZ**, Rt 1, Remington Road, Ormond Beach, FL 32074. Tel: (904) 437-2190

## CH. MCKAMEY'S IDEAL SUNSATIION



**Ch. McKamey's Ideal Conquest**

**CH. MCKAMEY'S IDEAL STYLESTEPPER**  
Krystal's Cherry Kijafa

**Ch. Millamor's Moonrock**  
**CH. DAJA JUSTA ROCKSAMPLE**  
Hood's Sweet Cookie (ptd.)

**Ch. Ken Gay Cavalier Joe**  
**CH. MCKAMEY'S CAVALIER'S PEPPER**  
McKamey's Little Duchess

**Ch. McKamey's Enchanting Pepper**  
**CH. MCKAMEY'S ENCHANTING BEN JO**  
McKamey's Blossom Jo

**Ch. McKamey's Ideal Conquest**  
**CH. MCKAMEY'S STAR OF GOLD**  
McKamey's Star Millicent

**Ch. McKamey's Ideal Perfection**  
**CH. MCKAMEY'S IDEAL SUNSATIION**  
McKamey's Elnor Diane

Puppies for breeding, show ring, or lovable pets, all popular bloodlines including **Cavalier's, Sungold's, Millamor, Bonner, Creider, Hood, Cherokee, Emcee's, Great Elms, Aristic, Model's, Brown's, Dixieland, English Hadleighs, Preserveness, Akela's**, going back to our good old lines **Julo's, Moneybox**, and many more.

**MCKAMEY'S SUNDAWN KENNELS**, Mrs. Norris McKamey, 1112 Sycamore Drive, Le Clare, IA 52753. Tel: (319) 332-5809

## Grafenhorst's Pomeranians



**Horst Graf**  
12000 N.W. 2nd Street  
Plantation, FL 33325

(305) 475-2465

# SPECIALS ADDITION

## TOP TWENTY POMERANIANS

### JANUARY - JULY 1987 AKC GAZETTE

Presently we find a number of Poms making their impact in Specials competition. In order to keep you informed as to the progress of these hard-working members of the breed, we are pleased to offer you SPECIALS ADDITION.

SPECIALS ADDITION is your monthly rating system of the Top Twenty Pomeranians in the United States. Rules for the rating system are as follows:

Breed points (not to be confused with AKC Championship points) are allotted to individuals according to the highest placement received in any given AKC show, as reported in the American Kennel Club Show, Obedience and Field Trials Awards Book. Only this source will be used for point awards. A number of points has been allotted to the various placements,

and they are as follows:

BEST IN SHOW (All Breeds).....	500
BEST IN SHOW (Specialty).....	250
BEST OF OPPOSITE SEX (Specialty).....	75
TOY GROUP FIRST.....	250
TOY GROUP SECOND.....	150
TOY GROUP THIRD.....	75
TOY GROUP FOURTH.....	25
BEST OF BREED.....	10

Statistician: SUSAN WADE. The following is the listing of the Top Twenty Pomeranians, as compiled from the JANUARY through JULY 1987 AKC GAZETTE.

POINTS	NAME (Owner)	BISA	BISS	BOSS	I	II	III	IV	BOB
5035	CH. PRECIOUS PETITE'S GABRIEL (D)..... (Claudia Pfeffer, Owner)	1	1	-	9	8	6	3	6
2580	CH. GREAT ELMS PRINCE CHARMING II (d)..... (Baker/Piazza, Owners)	1	1	-	5	2	1	5	8
1950	CH. APOLLOETTE MOONLITE GAMBLER (D)..... (M. & M. Presser, Owners)	-	-	-	5	3	2-	10	
1715	CH. D-NEE'S DARIN DUFFIE (D)..... (Nadine Hersel, Owner)	-	4	-	2	1	-	1	4
1315	CH. TEXICAN'S GIANT KILLER CHULA (D)..... (Norma Gad, Owner)	-	-	-	2	3	3	-	4
925	CH. TOPAZE JACKPOT TOBEY (D)..... (J. Butler, Owner)	-	-	-	2	2	1	-	5
885	CH. CLAIRMONT'S CAROLINA DELITE (B)..... (L. Bryson, Owner)	-	1	-	1	1	2	1	6
770	CH. IDA'S TOUCH OF BEV-NOR (D)..... (Tarver/Hageman/Creed, Owners)	-	-	-	2	1	1	1	2
765	CH. PATTY'S DUFFIES LIL SKIPPER (D)..... (S. Kelly, Owner)	-	1	-	-	1	-	1	7
730	CH. PRECIOUS PETIT RIPLE SUPREME (D)..... (Doll/McGinnis, Owners)	-	-	-	1	1	2	2	13
675	CH. HERD'S LITTLE YOYO (D)..... (B. Gibbs, Owner)	-	-	-	1	1	2	3	5
650	CH. HARBIN'S TIME TO POP THE CORK (D)..... (I. & S. Harbin, Owners)	-	-	1	1	1	2	1	-
595	CH. DUPRE'S SPARKLING GOLD-BUSTER (D)..... (J. Dupre, Sr., Owner)	-	-	-	2	-	1	-	2
515	CH. AUTUMN'S RED BLAZE OF BI-MAR (D)..... (L. Untalan, Owner)	-	-	-	1	1	-	1	9
*510	TIM SUE'S HIGH LIGHTS (D)..... (Goddard/Luginsland, Owners)	-	-	-	2	-	-	-	1
*510	VALCOPY WAKHAM COVER GIRL (B)..... (Gemmill & Plonkey, Owners)	-	1	-	1	-	-	-	1
440	CH. DIGNITY'S CHRIS O'LIGHTS (D)..... (B. & M. Dignowity, Owners)	-	-	-	-	2	1	1	4
410	WHARTON'S SEPPI VON HONIG (D)..... (N. & E. Wharton, Owners)	-	-	-	1	1	-	-	1
300	IDLE ACRES PINBALL WIZARD (D)..... (S. Kubankin, Owner)	-	-	-	-	2	-	-	-
*290	CH. KARLEE TWENTY FOUR KARAT (D)..... (B. & P. Curry, Owners)	-	-	-	-	1	1	1	4
*290	CH. MIXONS MUSIC MAN (D)..... (R. Mixon, Owner)	-	-	-	1	-	-	-	4
*290	CH. WEE HEARTS BIT OF GOLD DUST (D)..... (C. Ready, Owner)	-	-	-	1	-	-	-	4

\*Tie: placements alphabetical

## CLUB NEWS...OHIO VALLEY POM CLUB

Our OVPC has been growing in leaps and bounds...we now have 39 adult members and 2 Junior members with several others pending; we welcome anyone who would like to share the world of Poms with us here in Ohio...we have several out of state members, who include **Olga & Darrell Baker** from Texas. We are honored to have them with us; as everyone knows, Mrs. Baker is the current president of the American Pomeranian Club and Mr. Baker is an AKC delegate. We also have members from Pennsylvania and Michigan.

Our meetings have been very interesting as well as a lot of fun for all in attendance - I assure you, they do prompt everyone to "take part" - they move along well, with each member having ample opportunity to express their opinions and ideas.

OVPC had its official election of officers at the June meeting. They are: President, **Lorinda Vasuta**; Vice President, **James Shearer**; Treasurer, **Darren Lane**; Secretary, **Judy Shearer**. Our Board of Directors includes **Shari Stoffer Kubankin**, **Ron Feyh**, and **Larry Rookstool**.

OVPC now has its own newsletter, called "The Buckeye Barker"; it is sent out to members monthly and is published by **Barbara Stoffer**, with the help of many people who contribute items, as well as artwork.

Our PUPPY MATCH which had to be cancelled in June is now definitely set for September 12th, at Hiawatha Park in Mt. Vernon, Ohio...it will be an ALL BREED and OBEDIENCE Match with Trophies and Ribbons to be awarded. **Larry Rookstool of Lar-Ron Kennels** is in charge and may be contacted for further details at: 2520 Eakin Road, Columbus, OH 43204, telephone (614) 274-2118.

OVPC would like to welcome any Pom lovers to join us, if you are interested in the future of the Pomeranian breed. You don't have to be an exhibitor or breeder, we can use all the ideas and help available out there. We also welcome ALL the new members and thank them for joining us...*AREN'T POMS JUST GREAT!*

Our monthly meeting will be held the 3rd Saturday of the month at 8 p.m., at the Bonanza Restaurant in Cambridge, Ohio. For further details please contact our Secretary, **Judy Shearer**, 523 Miller Ave., Sugar creek, Ohio 44681. Tel: (216) 852-4136.

The following is a "poem" I wrote for our newsletter:  
To all the lucky people who share their lives with POMS...  
Precious minutes of every day...

Can be packed up and tucked away...in memories  
and, in time, relived...untarnished...brightly, there to give  
Joy and warmth...a smile or two...

Of the love your POMS share with you...

**Barbara Stoffer**, 13810 Easton NE, Alliance, OH 44601

**POMERANIAN VIDEO UPDATE...**A script meeting was held in New York City on July 20, 1987, at **Ailes Communications**, 456 West 43rd Street in Manhattan. Attending were a representative of the "Shooting crew", **Mrs. Edna Horn** (script producer), **Maxine Beam** (consultant), and the American Pomeranian Club Video Committee (**Dorothy Bonner**, **Olga Baker** and **Christine Hertz**). Many ideas in the script were expanded and there were many discussions. Excellent progress was made. The evidence that there would be some difficulty in securing a live example of every point in the script on the busy shooting date was considered with agreement to accept still pictures in cases of necessity. In view of this fact, Chairman Dorothy Bonner will be glad to accept any clear 8x10 pictures of Pomeranians sent to her. They may or may not be used. All Poms having won a Best-In-Show are invited to be in the video on the shooting date of October 6 in New York. Handlers **John Hertz** and **Skip Piazza** were appointed to assist. After the meeting, the American Kennel Club hosted a delicious luncheon. □  
**Dorothy Bonner**, 26093 Highway 281 North, San Antonio, TX 78260. Tel: 512-438-2256.

## LETTERS...

Dear Mr. McGinnis,

I recently received notification from you that my subscription to **The Pom Reader** would expire with the June issue. I promptly returned my money for another year as I don't want to miss a single issue - in fact every month I eagerly await the arrival of each issue. I'm only a pet Pom owner but I absolutely love them and love to look at all the beautiful pictures and read the articles. Many times I wish I could reach in and pick up one of the gorgeous dogs - they are so beautiful and loveable looking.

Recently on a trip to Florida I was able to visit one of the dog breeders that advertise in your magazine. I was going to be in Ormond Beach so I called **JUSTA POMS** to see if I might visit as I'd never had the opportunity to see a show Pom before. **Sharon Hiemenz** was very nice and took several hours out of her busy schedule to show me her dogs and explained many things about champion quality dogs which I didn't know. That just confirmed what I already knew - that people who love Poms are the greatest people in the world.

Thank you for your time and thanks for a great magazine.

**Connie Ramsey, Harrison, AR**

*And thank you for the nice letter - it made my day!* **JMcG**

Hi Joe,

**Received Pom Reader** and read it cover to cover as usual. I was interested to read about litter size in the letters column. My largest litter from a Champion bitch is 5 - free whelped. I had one female several years back that had 3 litters of 5 - free whelped. I finished Champion bitches from all of her litters of 5. I have worked long and hard to establish a line of free whelping females. Usually we use 4 pounds as the bottom weight to breed them. But the physical conformation, bone structure determines free-whelping ability - not the weight. I've had 3 pounds free whelp and 6 pounds require C-sections.

Now for getting on my soapbox. Too many breeders do what I like to call "panic sections". They don't give the female time to do her thing. I'm getting very particular about selling to those who I know routinely do C-sections. Oh well, we all have our very definite opinions!

Hope you all will be at Houston. I hate the drive in this hot weather but will appreciate the conveniences of the motor home coming and going.

Loved the story about the coon. We live in the country and can identify with content. Unusual thing happened here this year. When the Canadian Geese were flying north, a large flock stayed on our neighbor's conservation pond about 1/2 mile from us. They laid their eggs, hatched them out and still stayed. Now the half-grown wander all over the neighborhood. They are very tame since the neighbor waters and feeds them in his yard. Now we are waiting to see if they come back and stay next year for the second hatch and later generations. The dogs love to bark at them and cats stalk them but it doesn't even bother them enough to get out of the shade of the apple trees.

Continued good luck with the publications. It is hard work but one you must enjoy to stay with it.

As ever,

**Janice Luginsland**, Americus, Kansas

*Thanks for the letter, but CANADIAN GEESE? Maybe next year you can get...*

Dear Joe,

Couldn't resist calling about this ad in **The San Antonio Light** (July '87): "**POMERANIAN GEESE. \$27.50 pr.**" The man has been raising "Pomeranian Geese" for years. They are white with grey head and grey stripe down back. Range from 15-20 pounds!

**Joan Reilly**, San Antonio, Texas

*And now I've heard EVERYTHING!* **JMcG**

The

# Pom Reader

**Your Showcase For Purebred Poms**

**Presented by Doll-McGinnis Publications**

a division of Doll-McGinnis Enterprises, Inc.

8848 Beverly Hills, Lakeland, FL 33809

Telephones: (813) 858-2639 or (813) 858-3839

## ADVERTISING RATES

(In U.S. Dollars)

### OPEN RATE

FULL PAGE.....\$120.00

HALF PAGE.....65.00

1/4 PAGE.....35.00

1/8 PAGE.....20.00

1/16 PAGE.....12.00

### CONTRACT RATES

Contract rate applies to advertisers who agree to place one ad each month on a yearly basis. Size of ad and content may vary month to month, but advertiser must have one ad per issue. Contract advertisers receive a FREE subscription.

FULL PAGE.....\$96.00

HALF PAGE.....53.00

1/4 PAGE.....27.00

1/8 PAGE.....16.00

1/16 PAGE.....8.00

All ads 1/4 page and larger include one black & white photo at no extra charge. Extra photos: \$5.00 each. *Full Color* is available at \$300.00 per page. *Accent Color* is available - call for quote.

## SUBSCRIPTION RATES

12 Months - 12 Issues

\$24.00 (third class post)

\$40.00 (first class post)

### RESERVE YOUR COVER TODAY...

We have several covers available for the upcoming year: plan ahead to feature your Pom on the cover of **THE POM READER**...all covers suitable for framing! Cost of front cover includes full-color front cover and black & white inside front page. \$500.00.

## DEADLINES

The deadline for advertising is the 10th of the month preceding publication date (i.e., March 10th for the April issue.) All ads received after the deadline will appear in the next available issue. All photos will be returned with your copy of the magazine.

**THE POM READER** is sent as a courtesy to all AKC licensed Pomeranian, Toy Group, and Best in Show judges.

MAKE ALL CHECKS PAYABLE TO:

**Doll-McGinnis Publications**

