

The Pom Reader

NOVEMBER 1990

VOLUME V

NUMBER 9



SEASON'S GREETINGS FROM CLAIRMONT



Ch. Clairmont's Traveling Diamond

Pictured above with judge Robert Graham.

Pictured on the cover at 7 months of age when he was untrimmed, untrained, and unruly. Ruben says: *"I might be an Arctic breed, but I am definitely not a sled dog!"*

P.S. Happy Birthday to Joyce Apple's "Image" - 10 years old on November 19, 1990.

Breeder-Owner

Lance Bryson

Burlington, North Carolina

Handler

Pamela Campbell

Golden Aires Poms

Presents



CH. GOLDEN AIRES SHERRY'S JUBILEE

Ch. Beaver of Lenette x Great Elms Tiara

JULIE finished her Championship at 11 months of age and in less than a month of being shown. She is a gorgeous orange sable, typey and sound with a personality that wins your heart. To Julie's breeder, **Sherry Adams**, a very big thank you for allowing her to join us.

Julie has been bred to **Great Elms Tiny Tim**, a full brother to **Ch. Great Elms Shining Star**. We extend special thanks to **Ken Griffith** for making this possible. Other special litters are due this winter.

We salute Julie's sire, **Ch. Beaver of Lenette**, who is the sire of five champions in 1990 with more close to finishing. Congratulations to his proud owner, **Ken Griffith**.

Speaking of girls, a thank you to **Gail Jeub** for allowing **Berry's-N-Star Dust Chantilly** and **Star Dust's Sin-A-Min** to join us. They are sired by **Ch. Southland's Apollo Creed** and **Ch. Sungold's Max of Harbin**.

SHARON & JOHN MASNICK
(803) 928-3511

HCR 65 BOX 745
HUGER, SC 29450

The Pom Reader / November 1990

The Pom Reader

November 1990

Volume V, Number 9

This issue of the Pom Reader is possible in part by the following advertisers:

FRONT COVER

LANCE BRYSON

CLAIRMONT POMERANIANS

BACK COVER:

FRANCES STOLL

STOLANNE POMERANIANS

INDEX TO ADVERTISERS

ALLAN, M.....	22
BENKO, A.....	23
BANDY, M.....	21
BERNARDO, G.....	21
BRYSON, L.....	1,2
CARSON, M. & B.....	22
CATES, W. & C.....	23
CONRAD, H.....	17
COOK, S.....	21
CREED, C.....	22
DOSSINGER, M.....	22
DUPRES, E.....	21
FIDDICK, R. & J.....	22
FINCH, D.....	21
FRANKS, C.....	17
FREIA, J.....	21,25
GAD, N.....	23
GALAVICH, C.....	27
GRAF, H.....	23
GRIFFIN, G.....	22
GRIFFITH, K.....	21
HARTZ, K.....	17
HEARTZ, J. & C.....	21
HOVEY, J.....	21
HURLEY, J.....	11
JACKSON, C.....	22
JENSEN, P.....	21
JOHNSON, S.....	22
LUGINSLAND, J.....	22
MARTIN, D.....	8,9,21
MASNICK, S.....	3
NAGY, S. & B.....	22
NELSEN, L. & B.....	17
NEUGARTH, P.....	15
NORRIS, B.....	21
PEEL, C.....	17
PFEFFER, C.....	23
PIAZZA, S.....	23
RGS POMS & PEDS.....	23
REILLY, R. & J.....	22
ROSENBAUM, M.....	22
ROYAL CANIN USA.....	5
SAMPLES, M.....	22
SETMAYER, G.....	11
SIMO-NIS, D.....	7
STOLL, F.....	28
WADDELL, J.....	25
WELLS, M. & G.....	21
WHIDDON, B.....	23
WILLIS, V.....	17

TABLE OF CONTENTS

10. **UPDATE**
Top Ten Exhibitors, January-October 1990.
12. **BY THE BOOK: Tom Graves**
The target test; vaginal cytology.
16. **NEW CHAMPIONS**
Titleholders published in October 1990.
18. **SPECIALTY SCENES by Janice Luginland**
The Des Moines Specialty and the APC Skin Seminar.
19. **COMING ATTRACTIONS...**
The special Puppy issue of the PR.
19. **PR VITAL STATISTICS**
Advertising and subscription rates.
20. **OLYMPIA!**
Writer's block strikes and then, magically, withdraws!
23. **POMERANIAN ESCAPADES: Susan Johnson**
Typical show behavior.
24. **PARTI LINE: Nan Shartel**
Pretty Pagatonia Parti.
26. **SPECIAL ADDITION**
Top Twenty Poms, January-October 1990.

The Pom Reader is published by Doll-McGinnis Enterprises, Incorporated, 8840 thru 8848 Beverly Hills, Lakeland, Florida, 33809, out of admiration for the purebred Pomeranian. EDITOR: **JOE MCGINNIS**. BUSINESS MANAGER: **DUANE DOLL**. Postage paid at Lakeland, FL. No part of this publication may be reproduced in any form without the express written permission of the editor. The opinions expressed in this publication either editorially or in advertising copy are those of the authors and do not necessarily constitute endorsement by the publishers. The editor reserves the right to reasonably edit all copy submitted. All articles submitted become the property of the publishers. Subscription price for Third-Class Service in the continental United States: \$24.00. Foreign and First Class prices upon request. **Issues of the Pom Reader are sent as a courtesy to all AKC licensed Pomeranian, Toy Group, and Best In Show judges.** Direct all inquiries to: **Joe McGinnis, Editor, The Pom Reader, 8848 Beverly Hills, Lakeland, FL 33809.** Telephone: (813) 858-3839. FAX: 813-853-3624.

Now Every Dog Can Be A Winner With Club Cynotechnique!



The Club is now even better, because we've expanded the Cash Reward program to include *all* dogs in AKC-licensed specialty and all-breed shows.

With the new structure and prize system, cash is now awarded to the Winners Dog and Winners Bitch, based on their points. There are also prizes for Best of Breed, Group Firsts, Best in Show, and highest-scoring obedience trial. The

handler and breeder can win cash, too.

Also, now a dog itself is actually the Club member, rather than the owner. To enter a dog in Club Cynotechnique, just feed it Royal Canin Cynotechnique Dog Food on a continuing basis; then mail this coupon with proof-of-purchase from 80 lbs. of Cynotechnique for each dog.

For more details, call Royal Canin U.S.A. at 1-800-592-6687. Welcome to the Club!

Join The Club!

Sign my dog up for membership in Club Cynotechnique. I have enclosed proof-of-purchase UPC symbols from 80 lbs. of Cynotechnique foods and a copy of the dog's AKC registration.

Dog's Name _____

Breed _____ AKC Reg. # _____

Owner's Name _____

Address _____

City _____ State _____ Zip _____

Phone Number _____

THE POWER OF BALANCE



PET FOODS

Send to: Club Cynotechnique • Royal Canin U.S.A., Inc. • 1600 Heritage Landing • St. Charles, MO 63303

Showright

FROM THE EDITOR

It is particularly fitting that this, our special issue dedicated to females, comes right on the heels of Halloween. What qualifies me to compile a special female edition of the **PR?** I know a lot about girls. In fact, I was one once, and once was more than enough. And now that the scandal's out, I am forced to tell about one Halloween that was, indeed, a drag.

There was a costume party planned, to be hosted by a kid I could not tolerate. (Still can't. About eight years ago I was in a restaurant with friends when he and his wife joined our party. I got up and left.) We were, I guess, what could be called rivals, and competition between us was fierce. And so it was with considerable skulduggery that we ascertained his plans for the evening in an effort to outdo.

My best friend's girlfriend and the creep's girlfriend had been friends at one point; we sent her out to glean the necessary information. She produced beautifully, and promptly: The guys planned to wear their girls' cheerleader outfits, and the girls would wear their football uniforms. They planned to be the hit of the evening, and win the award for Best Costume. We were determined to put a stop to *that*, and so we hit upon a marvelous plan; they could be ditzy little cheerleaders; we would be Sluts. And our girlfriends would be our, well, procurers.

Gleefully we mapped out our strategy; much preparation had to be made. The girls would simply wear suits with black shirts and white ties and hats; where we got that idea, I have no idea. For us two guys, however, it was a little trickier. Being built more like Rocky than Rockettes, we had our work cut out. We enlisted help from all quarters far removed from school and our intended victims.

A woman I worked with offered the use of wigs, she had a bunch of them. Another acquaintance offered the use of tawdry-looking clothing - I won't tell where I knew *her* from. We searched for a large lady to provide shoes - the local bakery had one, and she lent us high heels. (But they were still too small and my feet have never been the same.) The girls offered to do makeup. We were all set. And the night of the Lend-Lease Ladies of the Evening loomed ever nearer.

But we were lacking what to us seemed to be the main ingredient, if we were to be ruthlessly alluring and able to drive men to distraction. I came up with the solution to that. *Water balloons*. And the very largest *in-time apparel* on the market. If she could have

The Pom Reader / November 1990



seen us, Dolly Parton would have retired.

As the time came to leave we were losing our nerve. We called our dates: "I'm not sure this is such a good idea," my friend Steve said. "What, are you chicken," asked his girlfriend, KC. "Us - NEVER!" We proceeded with the plan.

First we tried to sneak out of the house unseen by neighbors or my parents, no mean feat. Imagine, if you will, two high school seniors, six-foot and six-foot one, respectively in stocking feet, teetering down an icy drive on four-inch heels, mini-skirted, bewigged, and brested and trying to be bewitching. We somehow made it to the car and here was a miscalculation of major proportions.

The proportions we had assumed for the evening made it difficult to drive. I kept getting myself tangled up in the steering wheel and the shoulder harness, and, to top it off so to speak, I was driving a five-speed. With an upper structure like that, it would behoove one to drive an automatic. But things were already rolling; there was no stopping us.

We arrived at Kathy's house and she and KC did, indeed, look like pimps. We were hustled into the bath to have the makeup properly applied. But the girls were giggling so hard their aim was off, and Kathy got black goop in my contact lenses. As a result, for the rest of the evening everyone looked beach-brown, when in actuality, in Wisconsin, in October, very few were. But we got that over with and came out for inspection by Kathy's parents and their dinner guests, none of whom had missed a martini. The husband of one couple made a very sexist comment which I believe made for a very frosty weekend for him from his wife. But we were pronounced perfect. We left for the party.

And of course the first thing I did was to get picked up for speeding. The policeman approached the car and said, "May I see your driver's license, Ma'am." I knew I was in for trouble. He looked at the license, did a double-take, then shined his flashlight in my face. I offered, *Er, well you see, sir, it's Halloween...* and he countered, deadpan, "Halloween was Tuesday." I started to say,

well, I know, but Catholic kids can't go out on school nights and anyways I didn't plan the stupid party and I'd just as soon go home right now but he smiled and said, "Just take it easy from now on. MA'AM!" And then he burst out laughing. But I was up to the challenge. I yelled, *Men! They're all alike.* And quickly - slowly - drove away.

So that put a little fire under me, which was lucky as the other three were having second thoughts. We got to the party and nobody would get out of the car, so I went alone. I wobbled (and jiggled) up to the door and rang the bell. The creep's mother - who I liked - answered the door. Her jaw hit the front porch. I smiled coquettishly (I thought) and falsettoed, *Johnny didn't show up for our date, so I thought I'd come over here.* She beat a hasty retreat and the next thing I saw was Johnny with a pom-pom, pigtailed and hairy legs approaching the door with a scowl on his face. And underdeveloped anatomy.

We hit the party four abreast and blew them all away. We brought down the house and not only won Best Costume, but also I was awarded Best Legs. So there, John.

Shows are gearing back up and the rush is on to finish another Champion and rack up another Group before the final holiday of the year, Christmas. I will see you at ringside but I won't be wearing heels. And the best reason for that is that *that* particular night had a very sad ending.

Having foiled the plans of the enemy, we split to make an appearance at the drive-in which was my school's hangout, with most of the other revelers in hot pursuit. But there was a bee in the brassiere, so to speak. An envoy from the enemy camp proved to be our undoing. Or more exactly, the safety pin she wielded did us in.

It was in the parking lot, where we were holding court, whence came the attack. Quick as a wink, she struck and retreated, four quick pricks and she was gone. We *exploded*. Water went everywhere. And it was thirty degrees, so we were not only *flat*, we were *frozen*. We quickly made for home, wet and wild, our bubble having been burst. All our careful plans were a bust, so to speak. But I got her back in spades.

If you're ever in a phone booth in Madison, Wisconsin, and read the writing on the wall, and it says, "For a good time, call Beth, 44-D", and a phone number, you'll know who did it. The Guy with the Gams.

Until next month, best of luck in the ring and in the whelping box. Just don't come around me with the mascara. **JMcG**

*Simo-nis Pomeranians*⁷



Ch. Simo-nis' Saucy Mzz Teeny

What a pair - two beautiful girls: Nancy & Teeny. Teeny finished with all majors.

(A Ch. Nanshadow Hurricane Juan C.D. daughter)

Owner

Diana Simo-nis

Route Number One, Adona, AR 72001

Handler

Nancy Burnette

La Cheries Princess Yasmin

PRETTY AS A PICTURE
(so we thought we'd get two!)



Judge: Mrs. Paula Bradley

Owner/Handler Ed Martin

CH.
GREAT ELMS
SWEET PRINCE
X
LA CHERIE'S
HAPPY DAZE

BEST OF
OPPOSITE SEX
TWICE IN
ONE WEEKEND



Judge: Mrs. Elaine Rigden

Owner-Handler Ed Martin

Dorothy F. Martin
LA CHERIE
POMERANIANS

5354 Bluebird Lane
York, SC 29745

American Champion La Cherie's Little Sir Echo

Goes on to win a GROUP ONE

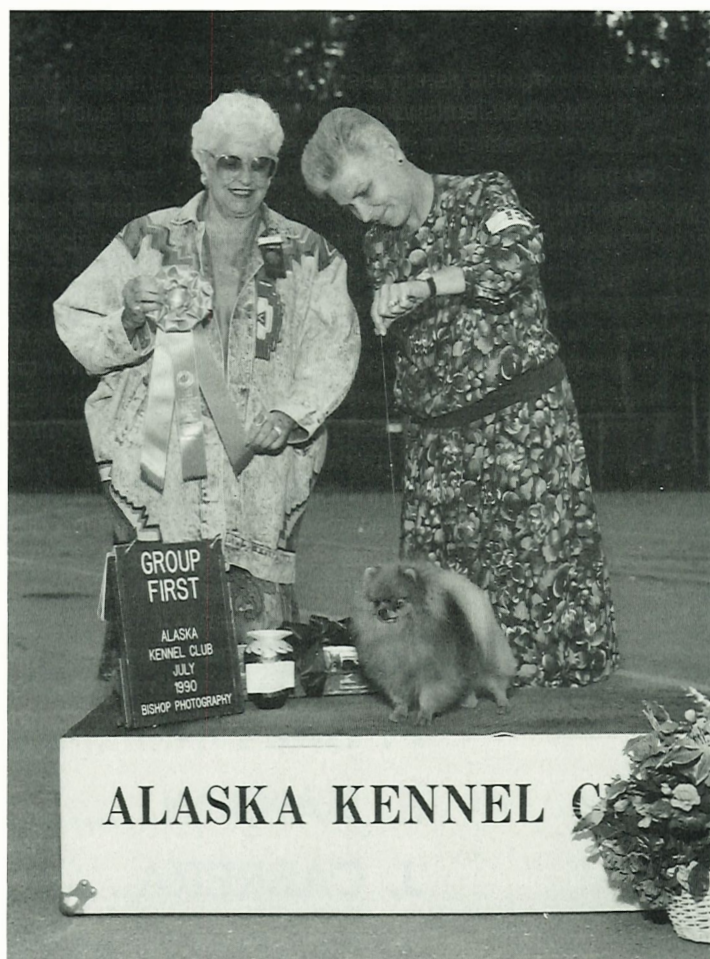


Judge: Mrs. Ann Wanner

Handler: Rebecca Branson

Great Elms One More Timstopper

X La Cheri's Sassy Rascal



Judge: Mrs. Mildred K. Bryant

One year ago (September 1989) we featured *Echo & Candi* winning his first points. We also listed some of his famous relatives who had set a high standard to follow. Hopefully, those ancestors & cousins will share our pride in Echo's success.

At Stud to Approved Bitches at his home in Alaska.

Dorothy F. Martin

5354 Bluebird Lane

York, SC 29745

803-831-8086

Candi Hullett

P.O. Box 672064

Chugiak, AK 99567

907-688-3845

UPDATE

★ TOP TEN EXHIBITORS ★

★ JANUARY-OCTOBER 1990 ★

Welcome to **UPDATE**, your monthly rating list of breeders and exhibitors out there winning points in the show ring. As most all serious Pomeranians fanciers are, in one way or another, involved in campaigning their Poms for AKC Championship points, we feel that it is important to keep tabs on this area. The procedures for tallying the point scale are as follows: Exhibitors are credited with all AKC Championship points won in the calendar year, as published in the **AKC Show, Obedience, and Field Trials Awards Book**. *Only this publications will be used for point credit.* Many times the actual show dates will vary

from the date of publication (i.e., a September show may not be published until November). The Gazette's calendar year runs from about October of the previous year until September of the present calendar year.

Points are allotted to the REGISTERED OWNER OF THE DOG ON THE DAY OF COMPETITION. **Statistician: Susan Wade.** Any questions concerning **UPDATE** may be addressed to the editor.

The following is the LISTING OF THE TOP TEN EXHIBITORS AS OF THE JANUARY-OCTOBER 1990 AKC GAZETTE.

EXHIBITOR POINTS

D. WATTS.....	60
P. GRIFFIN.....	*55
S. HANSON.....	*55
J. CABRERA.....	50
JACKSON/TAYLOR.....	*50
S. JOHNSON.....	49
GEMMEL/PLONKEY.....	41
J. LEHTINEN.....	39
G. & J. REED.....	*37
B. SEGELKEN.....	*37

*Tie: placements alphabetical

"GOPHER"

Multiple Group, BIS & BISS Pom - Am. Can. Ch. Homestead's Spit 'N Polish
"The Little Bundle of Dynamite!"



Shown taking Best in Show, Twin Brooks Kennel Club. Four days later he again went BIS at Trap Falls K.C., and the following day took another Group I - Putnam K.C.!!

He has just returned from winning the Pomeranian Club of Greater Des Moines Specialty.

Shown below with his 8 months daughter (on a HOT day)...POMAUNOK EARTH ANGEL, WB, BW, BOS from the puppy class!



"Angel" was bred by Fran Bosmann, Sparta, NJ.

"GOPHER" is a top-winning Pom that PRODUCES!

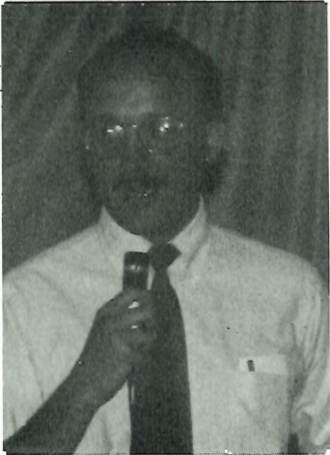
Breeder/Owner

Jean M. Hurley
Jupiter, Florida

Presented & Loved By
Gloria Setmayer
Paramus, NJ

By The Book

Tom Graves



● TARGET TEST ● VAGINAL CYTOLOGY ●

There is nothing on Earth like a puppy. I am having a wonderful time with my new litter. Those babies are...well...What can I say? They're incredible.

This month's column is about puppies. Specifically, it is about how to determine the optimal time for breeding, and how to predict, with accuracy, when the litter of puppies will be born.

I get a kick out of talking with dog breeders about their bitches' seasons and pregnancies. People seem to think that some of their bitches are likely to have gestations lasting as few as 59 days, while others have longer pregnancies lasting up to 65 days. Most breeders count their gestational lengths from breeding dates to whelping dates. That's why there is so much variation in gestational duration. Wouldn't it be nice to know with greater accuracy when a litter of puppies would be born? It is possible if you can detect not when breeding occurs, but when ovulation occurs. As an added bonus, if you know when ovulation occurs, you should also know the best time for breeding. In order to understand this, we'll need a little background information on the hormonal changes that occur during the estrous cycle and their relationships to some of the pivotal events that occur.

If you look at Figure 1 you will notice, first of all, that the length of proestrus (the period during a bitch's cycle which precedes ovulation) is highly variable. In the normal bitch, proestrus can range from 5 to 18 days in length. Sometimes it is even longer. Estrogen levels always rise at the start of a bitch's season. It is estrogen which is responsible for most of the external signs of "heat". For example, the bloody discharge from the vagina, flagging, attraction of male dogs, and vaginal cytology changes are all estrogen-dependent. Unfortunately, ovulation and conception have nothing

to do with estrogen at all. Therefore, it is possible that a bitch might come into season, flag, be bred by a male who is very interested in her, and even have vaginal smears done which indicate peak fertility without ovulating and getting pregnant. How many times have you heard this story from breeders? I have heard it many times.

At any rate, if you know when the LH surge occurs, you know within one day when your litter will be born, and you know when ovulation will occur and, consequently, you know the best time to breed.

What if, for instance, a bitch has a particularly long season? If a bitch has a proestrus which lasts 18 days, she will not ovulate until the 20th day of her season. Since it takes 2 days for an egg to mature and become ready for fertilization (see Fig. 1), if this particular bitch's owner were to breed her on days 9, 11, and 13 of her season, as is a common

practice, the bitch would not become pregnant. Sperm remains viable for 6 days at the very most once a bitch has been inseminated. As you can see, in this situation, it is critical to know when and if ovulation occurs. To guard against this happening, it is good to breed a bitch every other day throughout the length of her season. This, however, is very inconvenient, especially if a bitch is shipped to an outside kennel for breeding.

Rather than depending on estrogen-dependent external signs, it would be great, as you can see in Figure 1, if we could detect when the leutenizing hormone (LH) surge occurs. By convention, the day of the LH surge is referred to as day 0. As you can see, ovulation occurs 2 days after the LH surge. After roughly another 2 days, the egg is ready to be fertilized. At 63 days after ovulation (day 65) the puppies are ready to be born. There is almost no variation from this scenario. Only a small percentage of litters will be born at day 64 or 66. At any rate, if you know when the LH surge occurs, you know within one day when your litter will be born, and you know when ovulation will occur and, consequently, you know the best time to breed.

Unfortunately, measuring LH is difficult, and there are no external signs of LH changes in a bitch. However, we can measure progesterone. Fortunately, progesterone begins to rise (see Fig. 1) on the day of the LH surge, day 0, and stays high throughout most of gestation.

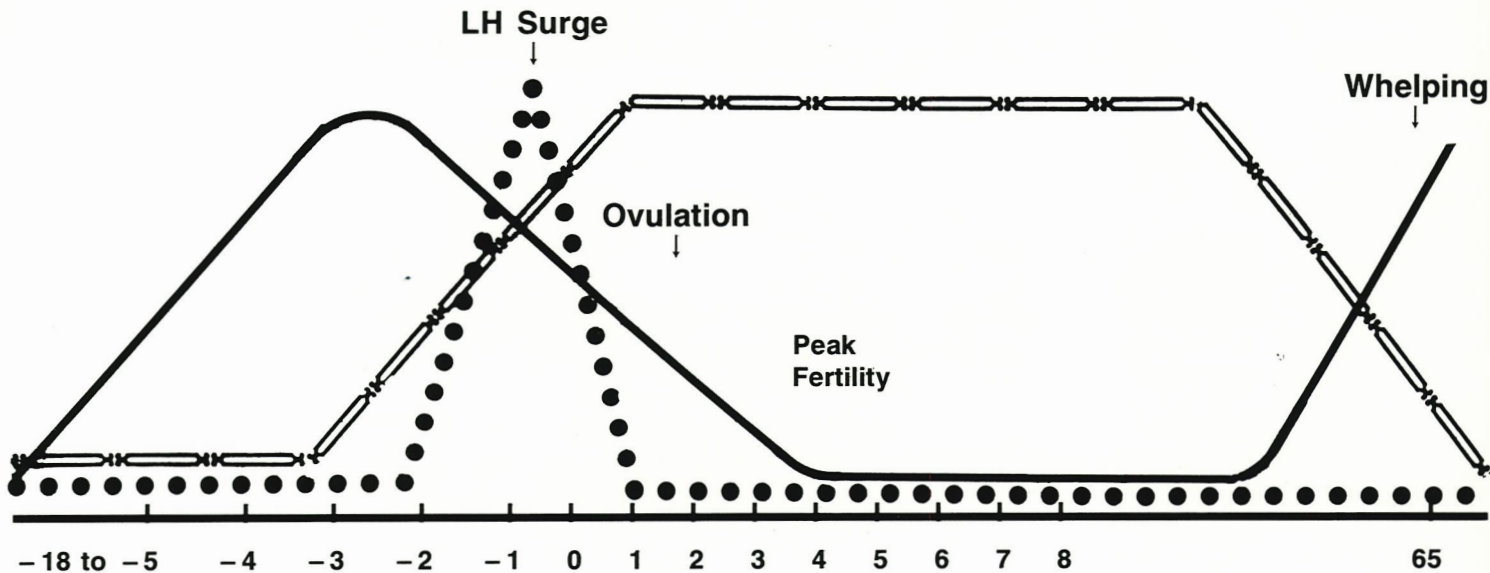
Figure 1: Hormonal Changes During the Estrous Cycle In The Bitch



 Progesterone

 Estrogen

 Leutenizing Hormone



Days

Proestrus..... Estrus..... Diestrus.....

Figure 1 — Hormonal changes during the estrous cycle in the normal bitch. Note that the period prior to the LH surge can vary greatly. Note further that the LH surge is synchronized with the initial rise in progesterone. Ovulation occurs at 2 days after the LH surge. The diestrus shift occurs at day 8. Whelping occurs at day 65 (± 1 day.)

There is a test which has recently been developed which can tell you when your bitch's progesterone begins to rise. To perform the test, a small blood sample must be collected. Every other day the blood is sampled for the initial rise in progesterone which will indicate that the LH surge has occurred. The test, called the **Target Test[®]** (Figure 2) is available as a kit. Each kit contains the materials necessary to perform 12 blood tests, certainly enough to monitor a bitch for at least one season. The test was developed by a company called **icg (International Canine Genetics)** in Malvern, Pennsylvania, and is available to veterinarians. The tests are easy to perform and are reliable but there is, as always, a downside. Using the Target Test is expensive for the breeder. First of all, the veterinarian must purchase the kit; that will probably cost the consumer about \$100. Secondly, the breeder must bring the bitch to the vet's office every other day until she ovulates. Each visit will include blood collection (it's really not very traumatic) and possibly a vaginal smear. The cost could add up. Therefore, it is only economical to use the Target Test if you have a bitch that has had a lot of trouble getting pregnant,

or if you have a particularly important breeding and you just cannot afford for the bitch to miss.

The Target Test



The Target Test[®]. Available to veterinarians from International Canine Genetics, Malvern, Pennsylvania. This test detects the rise in progesterone which heralds ovulation.

I recently used the Target Test on my own bitch. I wanted to breed her to a dog in the Philadelphia area, a 6-hour drive from Ithaca. My little bitch is not just a brood bitch to me. She is my pet. She lives in my house and eats in my kitchen and sleeps on my bed, and I was not about to put her in an airline crate and

ship her off to Philadelphia to spend a couple of weeks away from home. The bitch probably would have been fine, but I would have been a wreck. I am very busy in Ithaca and could not get more than one day off, so I had to know when the bitch ovulated. As it turns out, she had a very long season. She did not ovulate until the 21st day of her season! I bred her on the 23rd day of her season. She had her puppies late on day 64. (She would have had them on day 65 as predicted, but she had a C-section as soon as her temperature dropped. She had very large puppies - all of which were upside down and in a breech presentation (I did ultrasound) - so I decided not to risk a natural delivery. That's another topic.) Some of my breeder friends thought I was crazy to wait so long to breed my bitch. I was waiting for her to ovulate. When I explained this to the people who attended my seminar in Pittsburgh this year, I drew gasps from the audience. Then I boldly told them my puppies would be born either on the night of September 1 or the morning of September 2. Well, I blew it. We did a C-section and the puppies were born on the afternoon of September 1. So sue me.

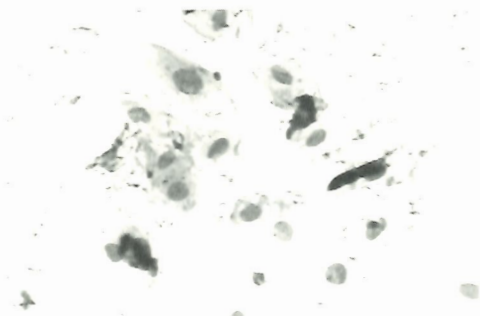


Figure 3 — High-power magnification of large intermediate cells. These cells predominate during proestrus.



Figure 4 — High-power magnification of cornified vaginal epithelial cells. These cells predominate during estrus and signify the correct time for breeding.

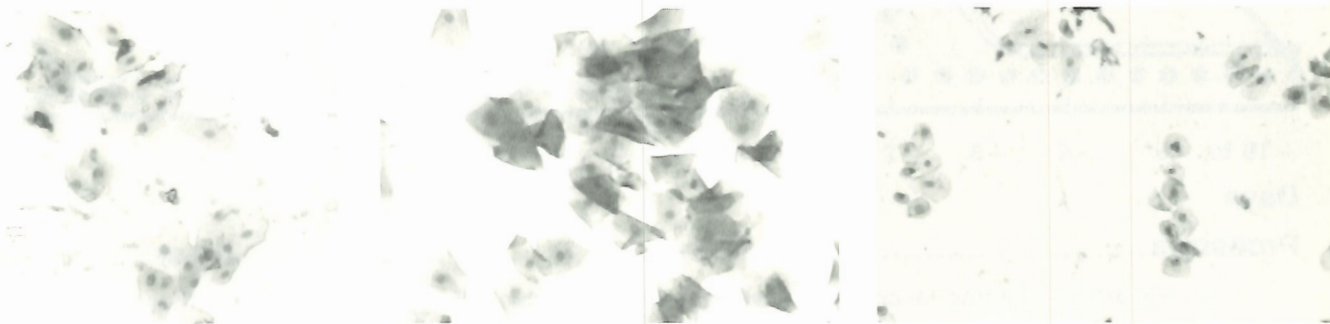


Figure 5 — **Left:** A vaginal smear from a bitch during proestrus. Most of the cells are intermediates. **Center:** A vaginal smear from the same bitch during estrus. Most of the cells are cornified. Note also the clumping together of cornified cells. **Right:** This photomicrograph depicts the diestrus shift. Note that no cornified cells are found.

Vaginal Cytology

There is another way to tell when a bitch ovulates, and that is by performing vaginal smears. Smears are very easy to learn to do. You should ask your veterinarian if her or she will teach you. All you need is a long cotton-tipped swab, a glass slide, some stain (new methylene blue is sufficient), and a microscope.

When you are reading smears you should look for two kinds of cells, either large intermediate cells (Figure 3) or cornified cells (Figure 4). Intermediate cells have a larger nucleus and rounded edges. I refer to them as "fried eggs." Cornified cells have jagged edges and shrunken nuclei. I refer to these cells as "corn flakes". At the beginning of a bitch's season, there are no cornified cells. When greater than 90 percent of the cells are cornified, it is a good time to breed. When estrus ends and diestrus begins, the cell population switches very suddenly from corn flakes back to fried eggs. This is called the diestrus shift and it always occurs 8 days after the LH surge. If you know when day 8 is, you

can count backwards (to day 2) to figure out when ovulation occurred. You therefore know when your puppies will be due. Unfortunately, cornification of cells has no relationship to ovulation. The smears can tell you it's time to breed well before a bitch ovulates. For this reason, it is important to keep breeding a bitch until the smears tell you it is no

Vaginal smears do not tell you with certainty when is the best time to breed. They only tell you when it is *not* the time to breed.

longer the time to breed. Vaginal smears do not tell you with certainty when is the best time to breed. They only tell you when it is *not* the time to breed.

As an example, look at Figure 5. The panel on the left was taken from a bitch during proestrus. The center panel shows a population of mostly cornified cells. This lasted for a number of days

and signifies estrus, the time to breed. The panel on the right shows the diestrus shift. Notice that the cornified cells have disappeared. This occurs on day 8. The bitch had her puppies 57 days later on day 65, as expected.

One of these days, I'll have to write more on vaginal cytology. There is just one thought I want to leave you with. There are many clinical cases of infertility in bitches of every breed. These cases can be difficult to diagnose and treat. However, by far the overwhelmingly most common cause of infertility in the bitch is simply breeding the bitch at the wrong time of her season. I've heard breeders say they have a stud dog who is "never wrong" and always knows when a bitch is ready to be bred. Most of the time, a good stud dog does know when to breed, but he can be fooled. I'll reiterate what I said earlier: You cannot depend on estrogen to tell you when to breed. Estrogen is what the stud dog is reacting to. The only way to know exactly when the optimal time for breeding occurs is to know when the bitch ovulates.

See you next time. □

Tom Graves

PRESENTING...

FAUNTINE CHATTER BOX



BI-MAR BALLADEER DE FAUNTINE X SWEETHEART'S FAUNTINE FLIRT

"Sweet Pea" is shown winning States KC Puppy Group 2 at the Maryland Sporting Dog Association on 9/15. She was also WB and BOS for her first Certificate of Merit. She repeated the win the next day for the second C.M. Judges were **Miss Marcia Foy** (pictured) and **Miss Anna Katherine Nicholas**. Thank you both! My little one also has AKC Reserves to majors at York KC and Talbot KC.

Watch for her — She's a Pistol!

Breeder-Owner-Handler

Patricia A. Neugarth

Casa De Fauntine

62 Ritters Lane, Owings Mills, MD 21117

(301) 356-3160

1990 CHAMPIONS

C

AS OF THE OCTOBER 1990 AKC GAZETTE

H

Allayn's Celestial Fudge (b) by Ch. Southland's Toasted Fudge x Ch. Carousel's Angel for Allayn. Breeder-Owner: **Mary Allan**.

Apple's Traveling Rambler (d) by Ch. Apple's Traveling Diamond x Ch. Jan-Shar's Charming Becky. Breeder-Owner: **Joyce T. Apple**.

Bev-Nor's Rheenadallas (d) by Ch. Bev-Nor's Statesman x Bev-Nor's Struts Her Stuff. Breeder: Stephen V. Nagy & Barbara F. Nagy. Owner: **Stobie P. Voltin**.

Bi-Mar Sunny's Phantom (d) by Ch. Bi-Mar Sundance Kid x Bi-Mar Chili of Sandtown. Breeder-Owner: **Mary A. Rosenbaum**.

Candray Can-Do (d) by Ch. Manchester's Mickey Rantont x Pompuf Wee Preshus Gemima. Breeder-Owner: **Debra A. Moran & Janice A. Wanamaker**.

Delemas Touch-O-Glass (d) by Ch. Carousels Glass Tiger x Carousels Touch-O-Class. Breeder: Pam Gault. Owner: **Margaret A. McDonald**.

Ea-Don's Champagne Lady (b) by Ch. Silver Meadows My-T-Love'N Joy x Hilane's Mystic Starlet. Breeder-Owner: **Donna E. Snyder**.

Emcee's Hy Lady Morganna (b) by Ch. Emcee's I'm Hy-Chips x Emcee's Solid Gold Tinker To. Breeder: Morris E. Carson & Betty F. Carson. Owner: **Beverly J. Poplar**.

Fame King Linus (d) by Ch. Wee Rambo of Coy's Top Mark x Rock's Golden Rockette. Breeder: Geneva B. Pennock. Owner: **Brenda K. Segelken**.

Great Elms Sweet Pepper (b) by Ch. Great Elms Something Special x Great Elms Dolly. Breeder-Owner: **Ruth L. Beam**.

Jan Le's Mark My Word (d) by Ch. Midas Fascinating Rhythm x Ch. Gaulke's Pepper Upper. Breeder-Owner: **Jane Lehtinen**.

Jeribeth Prince Liladyluck (b) by Ch. Great Elms Prince Charming II x LLL Nugget of Gold Brenda. Breeder: Olga M. Baker. Owner: **Carolyn Turnage**.

Kelly's Charwins Black Prize (b) by Ch. Silver Meadows Pep'R O'Legacy x Hilane's Mystic Starlet. Breeder: Donna E. Snyder. Owner: **Geri Kelly & Charles E. Woods**.

La Cherie's Little Sir Echo (d) by Great Elms One Mor Timstopper x La Cherie's Sassy Rascal. Breeder: Dorothy F. Martin. Owner: **Candace Hullett & Dorothy F. Martin**.

Lord Dragonslayer of Lenette (d) by Ch. Beaver of Lenette x Tabitha of Lenette. Breeder: K. G. Grif-

fith. Owner: **Dixieanne H. Bennett**.

Pompuf Fire Disco Carlin (d) by Ch. Pompuf Fancy Fire Disco x Pompuf Tynee Touch Corinne. Breeder: Gwen R. Hodson. Owner: **Roxanne Chumbley & Gwen R. Hodson**.

Rhynstone Dodger of Lenette (D) by Great Elms Bobby Beam x Great Elms Jessica of Lenette. Breeder: K. G. Griffith. Owner: **Joyce Urban**.

Sharel's Southern B And B (d) by Great Elms Bobby Beam x Sharel's Southern Belle. Breeder: Sharon Hicks. Owner: **Carolyn Turnage**.

Shir-Mar's Little Captain (d) by Ch. Great Elms Firefighter x Shir-Mar's Windy Red Teddy. Breeder: Margaret A. Johnston. Owner: **Bill Henry & Beverly Henry**.

Sungold's Short Circuit (d) by Ch. Sungold's Circuit Breaker x Ch. Sungold's Lady Mercedes. Breeder-Owner: **Anna LaFortune**.

Sungold's U Can (b) by Ch. Sungold's Circuit Breaker x Ch. Sungold's Corse U Can. Breeder-Owner: **Steve Gonzales**.

Tarahill Garden Party (b) by Ch. Great Elms Firestarter x Silva Lade Prim-N-Propor. Breeder: Skip Piazza. Owner: **Cheryl A. Wagner & Skip Piazza**.

Texican's Minority (b) by Ch. Texican's Primo De Pico x Precious Itty Bitty Mistyblu. Breeder: Debra L. Smith. Owner: **J. Patrick Farmer & Robert Kennedy**.

Tim Sue's To High Heaven (b) by Ch. Tim Sue's High Lights x Tim Sue's Charlie's Angel. Breeder: Sue Goddard & Sue Goddard. Owner: **Vicki Clendenin**.

Tiny Bubbles of Great Elms (b) by Singleoak Image of Great Elms x Hazel Most Precious. Breeder: Charles Hunsaker. Owner: **James L. Woodcock & Caroline J. Evens**.

TLC I's A Prince Too (d) by Ch. Jane's Wee Prince O'Jeribeth x Ch. Singleoak Ity Bity TLC. Breeder-Owner: **Carol Gillespie L. & Tom Gillespie**.

TLC Ity Bity's Princess (b) by Ch. Jane's Wee Prince O'Jeribeth x Ch. Singleoak Ity Bity TLC. Breeder-Owner: **Carol L. Gillespie & Tom Gillespie**.

Valcopy-Wakhan Scarlet Fever (b) by Ch. Merrymont's Sat'Rday Nite Fever x Ch. Valcopy Wakhan High Style. Breeder-Owner: **Randy Gemmill & Dana L. Plonkey**.

WL One More Nite (d) by Post Script's Fancy Caper x Post Script's Midnite Muffett. Breeder: Carol J. Baldwin. Owner: **Beth Wicker & Carol J. Baldwin**.

A

M

P

I

O

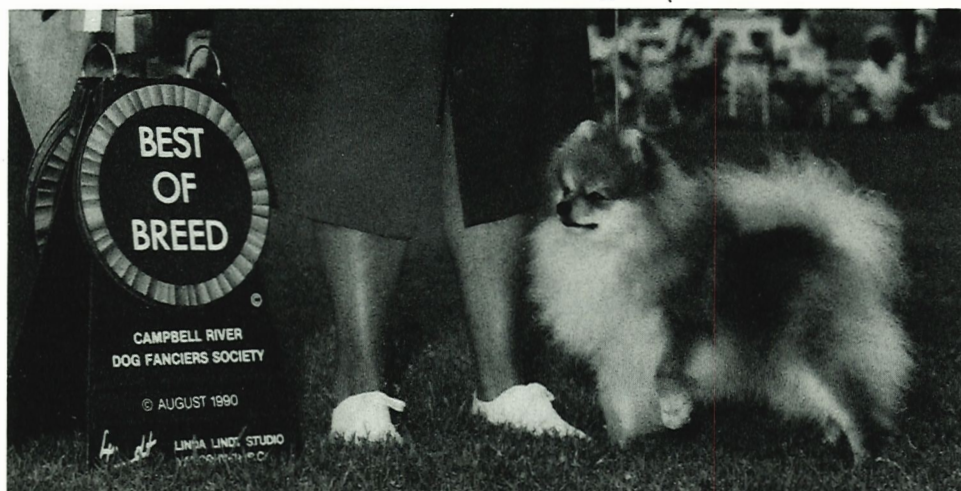
N

S

CHEYENNE POMERANIANS C.K.C. PERM. REG. OFFERS FOR SALE

CAN: CH. BILJONBLUE TOP BILLING — "NUGGET" - Pictured

BIS Ch. Great Elms Prince Charming II x Bit-O-Sass



Nugget, 2½ years old, clear orange, 5¾ lbs., is a very active stud dog, and is a very showy dog. Shown above finishing his Canadian Championship winning Best of Breed over BIS Specials. \$1,300.00 US Funds. Picture & pedigree upon request.

We also will have a few very nice linebred puppies sired by "Nugget" and the following studs:

● AM. CH. QUEENAIRE STARBURST

4¼ lbs., red sable, son of Am. Ch. Cedarwood's Image of Diamond

● CAN. CH. GREAT ELMS TOPPER OF LENETTE

5¼ lbs., red son of Am. Ch. Coy's Top of the Mark

● CAN. CH. CHINOOKWINDS CARIBOO GAMBLER

4¾ lbs., orange son of Am. Can. Ch. Silver Meadows Danny Love

● FOXWOOD RIO GRAND O'CHEYENNE

3¾ lbs., red son of Great Elms Joey of Lenette

COLLEEN J. FRANKS, P.O. BOX 131, CHEMAINUS, B.C. CANADA V0R 1K0. Tel: 604-246-4627

★ LE BECK POMERANIANS ★

Offers the following:

- ★ Ch. Creider Cut Across Shorty granddaughter. 3 years old, Red, free whelped. 4½ lbs.
- ★ Ch. Bi-Mar Sunny Supreme son, 10 months old, Red, short backed with a profuse coat. Excellent pedigree, potential stud.
- ★ Ch. La Cherie's Hot Fudge Ripple grandson (Oreo's son). 4 months old. Cream sable. Great Elms & Bev-Nor breeding.
- ★ Ch. Bonner's Lisalus Wag With Love grandson. 4 months old, Red, very small! Dam is mostly Creider breeding.
- ★ Puppies expected in November sired by Ch. Olive R. Twist of Fripp. Dam is heavily linebred with Great Elms.

Lee & Becky Nelsen

200 Miller Drive, Perry, FL 32347

(904) 584-6551

CIRCUS CIRCUS/FOXWOOD

We now have a few choice puppies available (Black & Tans, Sables, and Blacks) sired by:

- Great Elms Joey of Lenette, black & tan, Great Elms Tar Baby x Millie of Lenette;
- Ch. Bi-Mar Shogun of Jerbos, Specialty winner, Ch. Bi-Mar Sundance Kid x Bi-Mar Chili of Sandtown;
- Ch. Queenaire Starburst, Ch. Cedarwood's Image of Diamond x Ch. Chip-A-Way's Diamond Keepsake;
- Ch. Great Elms Model's Timstopper, Ch. Great Elms Timstopper Too x Model's Sweet Leilani;
- Jestom's Red Buttons, Jestom's Red Robin x Ch. Jestom's Miss Irresistable.

Pictures and pedigrees on request

Barbara & Don DeFord

206-833-4634

FAX: 206-458-3771

Cheri L. Peel

206-458-3198



MANOR HILL POMS

Manor Hill's Pure Luxury (Mikie)
son of Ch. Tim Sue's Dixie Dynamic

2 Litters expected

Helen Conrad

1677 Manor Road, Englewood, FL 34223

Tel: 813-475-1724

DOVER-HOLIHOUSE POMS

Ch. Stud Service

Parti, Chocolate, Black & Tan and Black

Stud Service

Puppies Occasionally

Kathryn Hartz, Patricia Foley & Dan Ninatoski

319 Ardmore Ave., Trenton, NJ 08629

609-695-1642

APPY ACRES POMS OFFERS

FOR SALE

2 Females (one black) and 1 male, whelped 7-29-90, by **LLL High Lights Strut N Stuff** (son of Ch. Tim Sue's High Lights) x **Classy Panuchi Babe**. \$300.00 & up. **BEAUTIFUL PUPS!**

Contact: Vicki Willis

Hwy. 57 North

Petersburg, IN 47567

Ph: (812) 354-9861

Standing at Stud: **LLL HIGH LIGHTS STRUT N STUFF**

Stud Fee: \$125.00

SPECIALTY SCENES

by Janice Luginsland



The Pomeranian Club of Greater Des Moines held its Specialty on September 7. The results of the judging are as follows:

SWEEPSTAKES

Judge: Mrs. Bonnie Hodson

Puppy Dogs 6-9 Months: **POM ACRES SABLE CALEB**. Owner: Juanita Fiddick

Puppy Dogs 9-12 Months: **FEISTY'S BANDIT OF POM ACRES**. Owner: Wendy & Victor Feist

Puppy Bitches 6-9 Months: **D-NEE'S DESERT D'LIGHT**. Owner: Nadine Hersil

Puppy Bitches 9-12 Months: **BELTANE SHEER SAUCE**. Owner: Paul & Barbara Curry

BEST IN SWEEPSTAKES

FEISTY'S BANDIT OF POM ACRES

BEST OF OPPOSITE SEX SWEEPS

D-NEE'S DESERT D'LIGHT

REGULAR CLASSES

Judge: Mrs. Robert H. (Dolly) Ward

Puppy Dogs 6-9 Months: **POM ACRES SABLE CALEB**. Owner: Juanita Fiddick

Puppy Dogs 9-12 Months: **JAN LE'S LASTING IMPRESSION**. Owner: Rose Hanson & Jane Lehtinen

Novice Dogs: **GAMLAN'S FIRE RUN**. Owner: Mary Ellen Hendrickson

Bred by Exhibitor Dogs: **PATTY'S BEV-NOR TEDDY RUXPIN**. Owner: Patty Jensen

American Bred Dogs: **SILBERG'S BIT O THE DRAGON**. Owner: Ruth A. Ellis

Open Dogs Black, Brown, Blue: **PINNT'S LOVELY LITTLE JIM**. Owner: Victor & Wendy Feist

Open Dogs Red, Orange, Cream & Sable: **TIM SUE'S JUST A BRIGHT LITE**. Owner: Paul & Barbara Curry

Open Dogs Any Other Allowed Color: **FEISTY'S BANDIT OF POM ACRES**. Owner: Wendy & Victor Feist

WINNERS DOG

TIM SUE'S JUST A BRIGHT LITE

RESERVE WINNERS DOG

GAMLAN'S ITOBA FIRST RUN

(Open Dogs ROCS)

Owner: Joyce B. Winkels

Puppy Bitches 6-9 Months: **ALDEN'S DEVILISH DIANA**. Owner: Alden & Janet Domrase

Puppy Bitches 9-12 Months: **BELTANE**

The Pom Reader / November 1990

SUCH A FROLIC. Owner: Paul & Barbara Curry

Bred by Exhibitor Bitches: **JAN LE'S SLIGHTLY OFF THE MARK**. Owner: Jane Lehtinen

Open Bitches Red, Orange, Cream & Sable: **BELTANE SHEER SAUCE**. Owner: Paul & Barbara Curry

Open Bitches Any Other Allowed Color: **ALDEN'S PARTI PEPSI HI**. Owner: Alden & Janet Domrase

WINNERS BITCH

BELTANE SHEER SAUCE

RESERVE WINNERS BITCH

ALDEN'S DEVILISH DIANA

BEST OF BREED

CH. HOMESTEAD'S SPIT 'N POLISH

Owner: Jean M. Hurley

BEST OF WINNERS

BEST OF OPPOSITE SEX

BELTANE SHEER SAUCE

OBEDIENCE

Judge: Mr. Sam J. Beck Jr.

Novice A: **DAINTI GAULKE'S CAMEO**. Score: 191. Owner: Deborah Winkel & Doreen Fernandez

Novice B: **JESSE**. Score: 188. Owner: Jayne & Lavina Hoomke

Open A: **SUNWAY'S BLACK BREEZE, C.D.**. Score: 195. Owner: Dawn R. Robertson

Open B: **I'M A CANDY ANGEL DOLL C.D.X.**. Score: 192. Owner: Ken & Kay Lowe

HIGHEST SCORING DOG IN REGULAR CLASSES:

SUNWAY'S BLACK BREEZE, C.D.

AMERICAN POMERANIAN CLUB SEMINAR...

What is the matter with that dog???

Have you seen or had an unusual "skin condition" occur in your breed lately?

One test had a total of 3 breeds with possible adult-onset growth hormone-responsive alopecia. Several breeds of dogs (including the Chow Chow, Poodle, Pomeranian, American Water Spaniel, Keeshond and Samoyed) seemed to be predisposed to adult-onset growth

hormone-responsive alopecia.

The American Pomeranian club is sponsoring a Seminar on skin conditions on Saturday, February 9, 1991, on the weekend of the **American Pomeranian Club Specialty** in New York City. The Seminar will be held at the Loew's Summit Hotel, Lexington Avenue at East 51st Street, New York, NY 10022. (Ph: 212-752-7000). Special room rates are available: \$109.00 plus tax per room (up to 4 people in a room).

The seminar is scheduled from 10:00 a.m. until 4:00 p.m. **Clint Lothrop Jr., D.V.M., Ph.D.**, will be presenting the seminar from 10:00 a.m. until 1:00 p.m. Following a one-hour lunch break there will be a Question and Answer Session with a panel of breeders from 2-4:00 p.m.

Dr. Lothrop is an Associate Professor with the Department of Environmental Practice at the University of Tennessee, College of Veterinary Medicine. He has been working with skin conditions of various breeds for over six years and specifically with Pomeranians. He will have a slide presentation to punctuate his speech.

The Question and Answer session panel will include notable breeders: **Sue Goddard, Olga Baker, Chris & John Hertz and Dana Plonkey.**

The cost for the seminar is \$30.00 per person for the Seminar and for the printed information from the Seminar. For \$10.00, those unable to attend will be able to obtain the printed information. There will be videos available.

For further information, contact **Janice Luginsland, Chairman: (316) 443-5157.**

Deadline for Reservations is February 1, 1991. Make plans to attend this important function; your participation will make this seminar a worthwhile venture. Until next month, just keep doggin' along!

Janice Luginsland
Rt. 1 Box 97, Americus, KS 66835

The Pom Reader

YOUR SHOWCASE FOR PUREBRED POMMS



SUBSCRIPTION RATES

11 Issues Per Year

Domestic

\$24.00 (Third Class Post) \$40.00 (First Class Post)

Foreign Rates Upon Request

Sample Issues: \$3.00 each Back Issues: \$4.00 each

subject to availability

ADVERTISING RATES

AD SIZE	ANNUAL PREPAID CONTRACT	OPEN RATE
FULL PAGE (Color)	\$300.00	\$300.00
FULL PAGE (b&w)	96.00	120.00
HALF PAGE	53.00	65.00
1/4 PAGE	27.00	35.00
1/8 PAGE	16.00	20.00
1/16 PAGE	10.00	12.00

All ads 1/4 page and larger include one black & white photo at no extra charge. Extra photos: \$5.00 each. All photos will be returned.

Make check or money order payable to:

Doll-McGinnis Publications

8848 Beverly Hills, Lakeland, FL 33809

Telephone: 813-858-3839

Coming in January

PUPPIES PUPPIES PUPPIES!

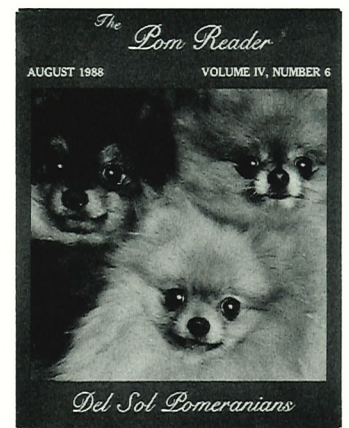
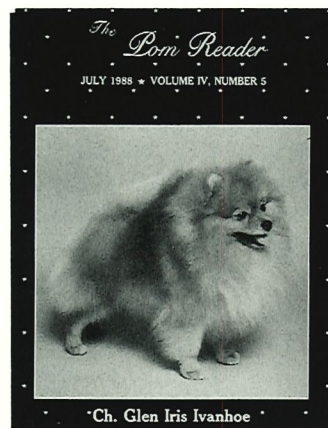
Only babies are allowed the special rates! Celebrate your up-and-coming superstars in our January issue dedicated to the next generation of Powerhouse Poms. Ads featuring pups under 12 months of age will enjoy these special rates:

FULL PAGE (Color): \$275

FULL PAGE (b&w): \$90

HALF PAGE (b&w): \$49

DEADLINE: DECEMBER 15



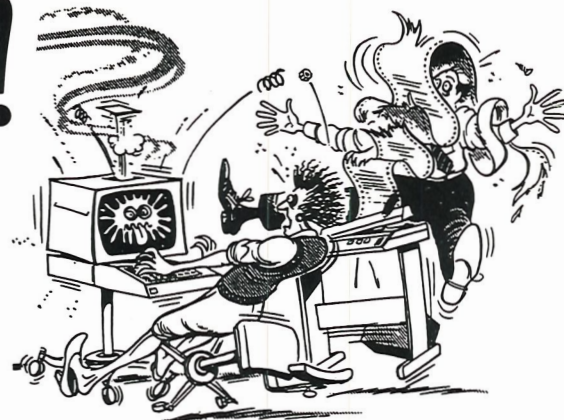
FOR YOUR CONVENIENCE, WE HONOR:



OLYMPIA!

DOGS HOWL AND...

WRITER'S BLOCK IS MIND BOGGLING.



Anyone who thinks writing articles is easy should sit around every day for a week of days and try thinking up things to write about. Non-show season makes it worse. At the shows either something interesting happens or someone comes up to tell you of an idea they would like to see in print. (Gracias to all who DO!) When you sit around home it is difficult.

Did I sat 'sit'? I must be dreaming of heaven. With 11 adult dogs, 8 juvenile delinquent puppies, 1 resident 'holy-terror' cat, 3 fish tanks, a Cockatiel who's in love with a Parakeet and 4 to 40 pet rats, dependent on how many rodent litters were born last night, who has time to **sit**? (I have a 23-year-old daughter who happens to like rodents. Her pet rats are docile, rather pretty creatures, once you get past their (ugh!) tails, and seldom cause problems - until one decides to take an escape escapade. With 3 sofas, 4 chairs and about 100 books in the family room this can be a problem! After you move all the furniture and the books and can't find the escapee you get smart and bring in the cat, who "nose" just where the culprit is hiding...and then the scramble begins!

Which brings me to wondering why they call animals dumb. If they're so dumb how come it is me who: pays for the lams, Kal Kan, cottage cheese, liver, hot dogs, Jerky strips, squeaky toys and balls; washes the feed/water bowls, kennel mats, towels; bathes, blow-dries and brushes the doggy coats, and keeps their area of the house Arctic cold in summer and Hades hot in winter while I scrimp on my electric bill by sweating or freezing in my end of the house?

And speaking of rats, as we were earlier, wouldn't it be super neat if we could genetically incline our toy breeds to do what the rodents do? They can eat absolutely

anything with no digestive upsets and even a dwarf rat born to normal-sized parents can give birth to a litter of 15 without a whimper. And if 2 female rats occupy the same cage they will share the nursing and care of the young, whether they both have young or only one does. It is something to see a rat sitting on 34 babies - not all her own, of course - and then turn a glazed eye on your Pomeranian dams who would not dream of free-whelping one pup, much less fifteen and would never sit on any pup by her v-e-r-y **own!**

Now that our writer's block is wearing off let's get into some mind-boggling request that come from potential Pom owners. Here is a composite of some letters received in the past:

I am new to dogs. I have, however, recently bought 2 females, one *linebred* on the famous MISHMASH kennels and the other a cross between the DOOLITTLE and SUMTIMES-DOES lines. I need a male who will blend with these girls. I am prepared to pay according to the number of champions in the pedigree; if all the dogs in the pedigree are champions I will pay a little more. To me color is immaterial but all my stud customers request orange so I would prefer orange. (*Wait a minute here; if you're new to dogs where did you get the stud customers?*) I would like a male weighing 4 pounds, give or take a pound. I am not interested in a puppy male; I want one who is at least 10 months old and preferably one who is a proven stud who breeds on his own. I would hope he has both his 'marbles' but if he only has one I will take him but I will pay less. If he doesn't have any 'marbles' I don't want him. I want a head study and silhouette full color photo and a video of him in action. (*What kinda action are we talkin' here?*) I will return these if you enclose SASE for

same! If the male has already been shown and has a point or two that would be a big plus. I am a novice at showing, in fact I have never been to a show, but I plan on getting into that real soon and if the male is ring trained that would help me to 'get started'. This might help you too, as if I finish him YOU will get some of the recognition. (*R-E-A-L-L-Y???*) Oh, just so you will know, I am writing to 20 other breeders and I guess you will understand by that to send the best pedigree and photos you have." (*Sure will - I'll make up an all-champion pedigree first thing tomorrow and send you a photo of Prince Charming...*)

Of course, the REAL mind boggler was this one: "I am looking for a Goldie Hawn. (*The movie star or the top winning female?*) I saw her once and this is what she looked to me: She had no legs (*Of course not, she was born equipped with roller skates*), she had really heavy bone (*Are we talking a lot of leg coat or a Shetland pony?*), she was blond (*You ARE talking about the movie star!*), she had no back (*Then you won't be needing that saddle I was gonna sell you*), her face was a cross between my 3-year-old son's teddy bear and my 5-year-old daughter's baby doll (*Is that Cabbage Patch or Barbie?*), and she has more hair than Lady Godiva..." (*Does that mean people will turn their heads the other way when she rides through town naked after whelping her puppies?*)....

Of course, it is assumed that the last request was not directed towards the BREEDER of lovely Goldie because the requestee hoped to luck onto a similar beauty for a fraction of the cost...call OLYMPIA anything but please don't call her stupid...

Until the dog howls again...

OLYMPIA
A/K/A Lois Ciliberto

RAIN BEAU POMERANIANS

Home of:
American Canadian Ch. Coy's Lucky Eight
 At stud to approved bitches
Jean (Sue) Cook
 6810 S. Magnolia, Ocala, Florida 32676
 (904) 237-1636

La Cherie Pomeranians

Dot Martin

5354 Bluebird Lane
 York, SC 29745

803-831-8086

Finch's Pomeranians

Diane L. Finch
 Rural Route 1 Kelley, IA 50134
 (515) 769-2444
 Puppies By:
 Ch. Finch's Wee Heart Andy Gibb
 Ch. Tim Sue's Moon Rocket
 Ch. Pomirish Robin's Top Shelf
 Great Elms, Millamor, Scotia lines; White/Red & White/Black parti puppies.

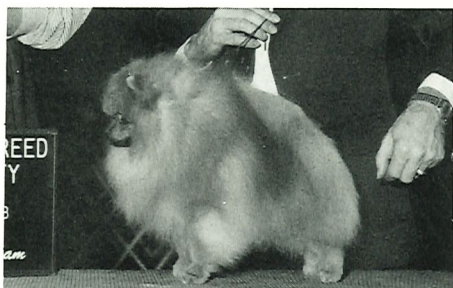


john e. heartz
 PROFESSIONAL HANDLING IN CANADA
 POMS A SPECIALTY
 PO BOX 189, BROOKFIELD, N.S. CANADA B0N 1C0
 Tel: (902) 673-2446



Lenette Pomeranians

Breeders of fine Poms since 1957
 4345 Rogers Lake Road • Kannapolis, N. C. 28081
 Phone: (704) 938-2042
 K. G. GRIFFITH, Owner



CH. GREAT ELMS MODELS TIMSTOPPER

4½ lbs. deep orange

Standing at stud to approved bitches. \$150.00. Free color picture and pedigree upon request. Several litters due by **Topper** as well as other outstanding studs.

Please call or write for price list. We offer our free newsletter to Pom breeders who are sincerely interested in working together to breed a better Pom.

STUD SERVICE

PUPPIES OCCASIONALLY



6520 GAME FARM RD. E
 MOUND, MN 55364

Patty's Pomeranians

PATTY JENSEN
 Phone (612) 472-5950



Goldcrest Pomeranians

Michael Bandy
 Glenn Bernardo
 20524 Pioneer Boulevard
 Lakewood, CA 90715
 (213) 402-9606 (eves)

Dupre's Pomeranians

Ch. Dupre's Sparkling Gold Buster



Multiple Toy Group Winner, sire of Am. Can. Champion winners of:
 • Best in Show All Breeds & National Specialties
 • Multiple Toy Groups
 • Multiple Group Placements
 • Multiple Best of Breeds

Breeder-Owner-Exhibitor
 Mrs. James R. Dupre Sr., Route
 2 Box 878-A, Colfax, LA 71417.
 (318) 627-5180.

BEV-NOR POMS...Ch. Bev-Nor's Toasted Fudge — Number 1 Pom 1981, 1982, 1983, 24 BIS, 5 Specialties, Sire of top winning females 1984, 1985, sire of only Black & Tan to ever go BISA, a top producer. Stud fee: \$250.00 (limited to 15 per year.)
Ch. Bev-Nor's Statesman — Multi Group winner, a Toasted Fudge son, sire of Champions, a top producer for 1988 also. Stud Fee: \$250.00.
Puppies Available.
Bev & Bill Norris 7747 Meadow Road
 (301) 255-1343 Pasadena, MD 21122

JD's Pompous Poms

Janet Hovey & Dan Farrell
 RR 3 Box 45A
 Huntingdon, TN 38344
 (901) 986-0014

MNM'S POMS-R-US

MARY & GENE WELLS
 4986 Avila Way, Buena Park, CA 90621
 714-994-0259

Janesa's Poms

Jerrie Freia
 P.O. Box 2775
 Morgan City, LA 70381
 504-384-7466

D'AMBI POMMS

Offers *PUPPIES, BROODS & STUDS*
directly from **GREAT ELMS KENNEL**

Margaret Samples
(704) 821-7450

5816 Deal Road
Matthews, NC 28105



Pomeranians

Ch. Doo-Shay's Funky Madeanna finishes prior to 11 months and takes a Group I and a Group IV - Smile, Pat Dieball!! We are - thanks to you!

Shannon Johnson
Route 1, Box 456
Warrenville, SC 29851.
Tel: (803) 663-0210

★ STARLITE POMERANIANS ★

Home of *CH. Starlite Legacy Choco Bear*

Gayle & Tom Griffin
3074 Lancaster Drive NE No. 253
Salem, OR 97305

Emcee's Pomeranians



Inquiries Invited: (804) 741-3024

Morris & Betty Carson
9826 Waltham Drive
Richmond, VA 23233

Southland Pomeranians

"*RAYS OF SUNSHINE*"

CHARLOTTE CREED
6618 LOST RIDGE
PINEVILLE, LA 71360
PHONE 318 - 466-3456



Pom Acres Kennel

R.R. 4

Cedar Falls, Iowa 50613

319-989-2199

DOSSMAR

For sale or terms: Blk/wht. brood bitch, free whelp; red/wht. brood bitch, free whelp. Both 3 years old. Org/wht. male 1½ years old. Parti pups born in March.

Marian Dossinger
414-334-4889

3936 Hi Mount Rd.
Kewaskum, WI 53040

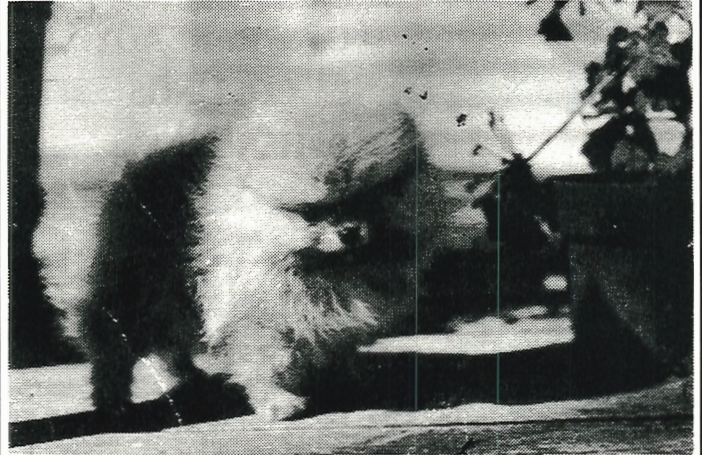
Glen Iris Pomeranians

Cheryl A. Jackson
Joel M. Taylor



1038 16th Ave. South
Birmingham, AL 35205
(205) 328-6603

Chesai Pomeranians



Robert & Joan Reilly
26093 Highway 281 North
San Antonio, TX 78260
(512) 438-2667

RHEA-NA POMMS

Exclusively Bev-Nor Breeding

Champion sired puppies will be available summer & fall.

Steve & Barbara Nagy
Rt. 2 Box 221, Stephens City, VA 22655. Tel: 703-869-3749

ALLAYN'S

Mary Allan
2508 E. Tacoma Street
Broken Arrow, OK 74014

Ph: (918) 485-3010
Or
(918) 355-2531

Bi-Mar Pomeranians

Home of BIS CH. Bi-Mar Sundance Kid

Mary A. Rosenbaum
38711 - 200th Avenue SE
Auburn, WA 98002
206-833-2160

LLL

POMERANIANS

Home of #1 Bitch 1989
CH. LLL HIGH LIGHTS
GOLDIE HAWN

Janice Luginsland
Rt. 1 Box 97
Americus, KS 66835
316-443-5157

Grafenhorst's Poms

- Tiny Parti's
- Pretty Heads
- Open Markings
- Heavy Coats
- Short Backs
- Super Soundness

We are very excited about our lovely litters from *Ch. Great Elms Lil Man of Lenette*, and the top winning chocolate in the U.S., *Ch. Starlite's Legacy Choco Bear*.



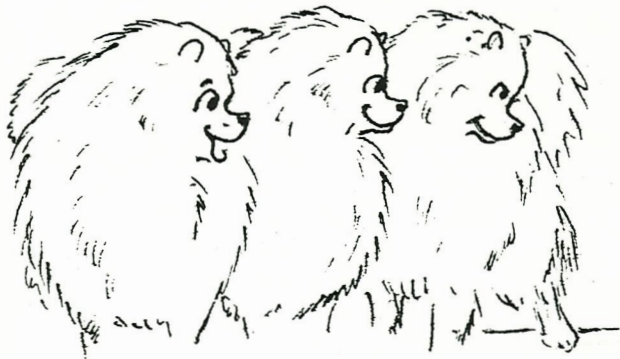
These super boys are at stud to approved bitches. Several promising puppies available. For further information, contact:

HORST GRAF
GRAFENHORST POMS
12000 NW 2nd Street
Plantation, FL 33325
(305) 475-2465

Pomeranian Escapades

Susan Johnson

DOG SHOW
GROOMING



Susan Johnson

HERE COMES ANOTHER DOBIE —
LET'S MAKE HIS EARS RING!

WHID-DON'S POMS

Home Of:

TIM SUE'S SPARK OF LIGHT
TIM SUE'S DYNAMITE

Barbara T. Whiddon, 4703 Monroe Hwy.,
Pineville, LA 71310. Tel: 318-640-2993.
Quality Bred Puppies Occasionally



ICERAMA POMS

Skip Piazza
THE KENNELS

527 B Church Road, Avondale, PA 19311
215-268-8000 or 215-268-2266



Home of "Gabriel"

Breeder/Owner
CLAUDIA PFEFFER
P.O. BOX 10432
Jefferson, LA 70181
(504) 737-1729

Precious Petites

HOME OF THE
Chula ♥ KILLER ♥

AND ALL THOSE GORGEOUS GIRLS

NORMA C. GAD
(915) 584-0942

5908 Upper Valley Road
El Paso, TX 79932

RGS Pomeranians & Pedigrees

Lifetime guarantees, medical insurance, rebate program for show. Pedigrees researched. 24 hour availability. 904-247-5384.



Blossom Heights Poms
Blossom Heights
McGuire's Amy

John & Arlene Benko
5351 Jeffrey Avenue
West Palm Beach, FL 33407
407-842-5591

CIRCUS CIRCUS/FOXWOOD

We have litters due in September and October By:

- Great Elms Joey Of Lenette
 - Ch. Queenaire Starburst
 - Ch. Great Elms Models Timstopper
 - Ch. Bi-Mar Sho-Gun of Jerbos

Barbara & Don DeFord
206-833-4634

FAX: 206-458-3771

Cheri L. Peel
206-458-3198

TWIN OAKS POMS

BILL and CAROL CATES
948 WYNDSOR DRIVE, HIXSON, TENNESSEE 37343
615-842-8184

THE PARTI LINE



by Nan Shartel

PRETTY PATAGONIA PARTI

Pretty Patagonia Parti is as busy as she usually is over the holiday season. **Patty's Canine Catering** business triples this time of the year. But right on schedule arrives one of her puffy pink envelopes, stuffed to overflowing with some new and innovative recipes to set the feet a dancing and make each and every canine in Condon lick their lips in festive anticipation of Thanksgiving.

Patty's career as a canine caterer was a natural for her as she was born wearing the most impeccable white apron over her bright red dress. From the start, it was noted that she had a canine sense of style and taste not seen in many years.

While her siblings and friends romped and played away their days in the garden, Patagonia planned picnics. Even as a plump puppy her recipe for "Ants in your Pants Gizzard Snaps" was widely acclaimed by the pups in her neighborhood. Within a year Patagonia was a renowned canine hostess in this neck of the woods...

Alas, Patty's gourmet skill outgrew Condon, so she has moved to ply her craft in Portland, leaving all her country canine cohorts behind with the knowledge that her heart and her style were forged here.

So none were surprised when that envelope arrived, addressed to all the culinary canines in Condon. The return address read:

PARTI'S BY PATAGONIA
Portland, Oregon

Once again Patty has simply outdone herself with the most scrump-diddly-The Pom Reader / November 1990

umptious holiday fare ever. Her recipes retain that Northwest country flair so appreciated by her Condon fans. For Thanksgiving her **Pompous Pilgrim's Progressive Hors D'Oeuvre Plate** is the snackiest ever, and her **Puppy Lovin' Stuffin'** is a must-cook.

At Patagonia's request, I'm passing these recipes along to our readers with her best wishes for the happiest possible Thanksgiving from man's best friend...and Pomdom's most Prestigious Cook!



PATAGONIA PARTI'S HOLIDAY IDEAS

PUPPY LOVIN' STUFFIN'

1½ cup turkey broth with fat removed
½ cup cooked turkey gizzard, finely chopped
¼ cup carrots, finely chopped
¼ cup celery, finely chopped
1½ cup Pedigree small chunk dry dog food.

Mix together and bake at 325° for about 20 minutes to 30 minutes until done.

POMPOUS PILGRIM'S PROGRESSIVE HORS D'OEUVRES PLATE

¼ lb. Venison - jerkied
¼ lb. Armenian string cheese
Corn bread with bits of turkey liver cooked inside.

Slow cook venison (200°) until jerky. Arrange jerky, cheese and corn bread in small chunks on a plate for pompous snacking.

HAVE A LIP-SMACKING THANKSGIVING FROM PATAGONIA PARTI!!

Nan Shartel, 409 N. Lincoln, Condon, OR 97823-0181

RIDGECREST POMERANIANS

Puppies due November 18th, 1990

Ch. Model's Truly-A-Diamond

Ch. Apple's Traveling Diamond

Apple's Traveling Crickett

Ch. Cedarwood's Image of Diamond

Mar-bi-leas Sun Fella

Cedarwood's Pitti Patti

Cedarwoods Laday Gaylor

Sire: Skyland's Diamond Dust

Great Elms Timstopper's Davy

Ch. Great Elms Something Special

Great Elms Becky

Great Elms Special of Skyland

Pompuf's Masters Gold Chip

Pompuf Dancing Tammi

Pompuf Dancing Mel-O-Dee

Int. FCIC. Ch. Jolly Wee Fancy Dan of Peppi

Ch. Jolly Wee's Desert Breeze

Randy's Brandy of Jolly Wee Dam

Rosewood's Desert Breeze Duke

Ch. Mercer's Young Duke of Tim Sue

Rosewood's Dragonfly Duchess

Windy Acres Valentine

Dam: Skyland's Desert Breeze Dream

Pombreden's Read Luke Sixteen

Annon's I'm A Little Keeshond

Annon's Chin-Chin

Skyland's Little Nik Ki

Winters Sir William

Winter's Little Nik Nak

Shirleys Twinkle

Puppies Due November 19th, 1990

Ch. Great Elms Timstopper Too

Great Elms Timstoppers Davy

Great Elms Sweet Candy

Ch. Great Elms Something Special

Great Elms Red Robin

Great Elms Becky

Great Elms Blackie Tan

Sire: **Ch. Great Elms Sweet Pepper**

Ch. Great Elms Timstoppers Image

Great Elms Red Robin

Princes Lew of Chatmoss

Great Elms Dolly

Great Elms Little Teddy

Great Elms Mollie

Rosewood's Becky Lou

Model's Midas Gold

Ch. Anwin's Lil Sirius

Anwin's Lil Bit of Love

Ch. Dendy's Li'l Sirius

Danrastus By Dendy

Dendy's Spice II

Dendy's Tiara Lea

Hillcrest's Li'l Ginger Snap

Cedarwood's Gold Nugget

Ch. Great Elms Li'l Man of Lenette

Great Elms Bunny Rabbit

Cutshaw's Sweet Turn Out

Great Elms Traveling Buddy

Precious Cherie Heavner

Slinky Stirewalt

JEAN B. WADDELL, Rt. 1, Box 389, Laurel Springs, NC 28644. Tel: (919) 982-9479 or (919) 982-3099

JANESA'S STRUTTIN AT BLAKES

Ch. Bev-Nor's Toastmaster x Ch. Janesa's Hi-Struttin Daisey

This very heavy sable sound boy is a littermate to **Ch. Janesa's Hi-Struttin Ubet**. He is being shown by the very able team of **Cheryl Jackson & Joel Taylor** for co-owners, **Lois Holmes & Jerrie Freia**. Thanks, Cheryl & Joel! After he is finished in the conformation ring, he will be shown in Obedience by his co-owner Lois Holmes.

Jerrie Freia

Janesa's Pomeranians

P.O. Box 2775

Morgan City, LA 70381

504-384-7466

Cheryl Jackson & Joel Taylor

Glen Iris Pomeranians

1038 16th Avenue South

Birmingham, AL 35205

205-328-6603



SPECIAL ADDITION

★ JANUARY-OCTOBER 1990 ★

Presently we find a number of Poms making their impact in Specials competition. In order to keep you informed as to the progress of these hard-working members of the Breed, we are pleased to offer you **SPECIAL ADDITION**.

SPECIAL ADDITION is your monthly rating system of the Top Twenty Pomeranians in the United States. Rules for the rating system are as follows:

Points (not to be confused with AKC championship points) are allotted to individuals according to the highest placement in any given AKC show, as reported in the **AKC Show, Obedience and Fields Trials Awards Book**. *Only this source will be used for point credit.* A number of points has been allotted to the various placements, and they are as follows:

BEST IN SHOW (All Breeds).....	500
BEST IN SHOW (Specialty).....	250
BEST OF OPPOSITE SEX (Specialty)...	75
TOY GROUP FIRST.....	250
TOY GROUP SECOND.....	150
TOY GROUP THIRD.....	75
TOY GROUP FOURTH.....	25
BEST OF BREED.....	10

Statistician: Susan Wade. Tie placements are marked with an asterisk. BISS is for Independent Specialties only. The following is the listing of the Top Twenty Poms, as per the JANUARY-OCTOBER 1990 AKC Gazette.

POINTS	NAME	BISA	BISS	BOSS	I	II	III	IV	BOB
4175	CH. JERIBETH SIR LANCELOT (D)..... (Baumgartner/Conino/Baker, Owners)	1	-	-	5	10	9	6	10
4150	CH. HOMESTEAD'S SPIT 'N POLISH (D)..... (J. Hurley, Owner)	2	-	-	6	6	7	5	10
4010	CH. TOMHO CHAMPAGNE WISHES (D)..... (R. Koeppe, Owner)	-	-	-	7	7	10	8	26
3665	CH. SOUTHLAND'S MR VIP O'IDA (D)..... (Creed/Jackson/Taylor, Owners)	1	-	-	5	7	8	5	14
3000	CH. SHADOMOUNTIN ONE MAN SHOW (D)..... (K. Bucher, Owner)	-	1	-	6	4	7	3	5
2780	CH. JAMOL'S KLASSIC HI TIME (D)..... (B. Paull, Owner)	1	-	-	5	4	3	5	8
1865	CH. TIM SUE'S HIGH LIGHTS (D)..... (S. & T. Goddard, Owners)	-	-	-	2	5	5	4	14
1820	CH. JANE'S WEE PRINCE OF JERIBETH (D)..... (G. & J. Reed, Owners)	-	-	-	1	7	5	3	7
1715	CH. JAN-SHAR'S HILLBILLY CLASSIC (D)..... (S. Hanson, Owner)	-	-	-	4	4	-	1	9
1690	CH. STOLANNE THUNDERBOLT THOR (D)..... (F. Stoll, Owner)	-	-	-	4	3	1	3	9
1595	CH. TIM SUE'S HARBOR LIGHTS (D)..... (S. & P. Conlee, Owners)	-	-	-	1	6	5	2	2
1530	CH. LANA'S TOP PRIORITY (D)..... (Craig/Ejhorszt, Owners)	-	-	-	2	5	2	2	8
1260	CH. SHY ACRES OUR MAN FRIDAY (D)..... (A. Roberts, Owner)	-	-	-	2	4	2	-	1
1215	CH. TOMHO STRUTTING TERMITE (D)..... (H. Sklar, Owner)	-	-	-	2	4	-	3	4
*1045	CH. CLAIRMONT'S TRAVELING DIAMOND (D)..... (L. Bryson, Owner)	-	-	-	1	2	5	2	7
1045	CH. TEXICAN'S HOUDINI (D)..... (M. Lang, Owner)	-	-	-	2	3	1	-	2
900	CH. LLL HIGH LIGHTS GOLDIE HAWN (B)..... (Stetson/Luginsland, Owners)	-	-	-	1	3	2	-	5
750	CH. GREAT ELMS PRINCE CHARMING II (D)..... (Piazza/Baker, Owners)	-	2	-	1	-	-	-	-
745	CH. ODYSSEY'S KENO WHIZ (D)..... (Trauner/Manuscak, Owners)	-	1	-	1	1	1	-	2
700	CH. GARTON'S GOLD DUST (D)..... (L. Garton, Owner)	-	-	-	1	2	1	1	5

Ch. Pixie's Buttons-N-Bows

Ch. Blake's Sir Robert John
x Pixie's Double-Bubble



Continues her winning ways with *another* Group placement at Kokomo K.C. under judge Alan Harper. Handler, Donna Megenhardt.

To answer your many inquiries, her pedigree is the old proven combination of Showstopper and Great Elms, with repeats going back to Ch. Theldun's Almond Fudge and Ch. Lennis' Tar-Baby of Great Elms.

BB

FLASH — FLASH — ARE WE PROUD OR WHAT?!!

BB wins back to back Group I's under judge Barbara Alderman (Licking River KC, Oct. 13) and Forrest McCoy (Mad River Valley KC, Oct. 14). Handler: Karen Fitzpatrick.

Breeder-Owner

Carol A. Galavich

PIXIE POMERANIANS

52821 German Hill Road, Powhatan Point, Ohio 43942

Phone: 614-458-1705

STOLANNE POMERANIANS



A tribute to females would not be complete without recognition of these 3 champion littermate sisters, **Ch. Stolanne Mystique Starlet**, **Ch. Stolanne Mica Rockelle**, and **Ch. Stolanne's Sweet Ginger Brown**. After confirming their soundness and beauty in the show ring, they are now proving their worth in the whelping box...

● **Starlet's** first free-whelped son by **Ch. Bea Mary Hazy Day** is making his debut in the show ring, and she has a second litter of 3 (2 females, 1 male) by **Ch. Fry's Magic Kamehameha**.

● **Ginger** has a son by **Ch. Stolanne's Stormy Sequel** and is in whelp to **Ch. Stolanne's Prancing Prince**.

● **Mica** has been bred to **Ch. Bea Mary Hazy Day** and we anxiously await the outcome.

●
These girls (and their owners) are proud of their famous brother, **Ch. Stolanne Thunderbolt Thor**, who recently won his first BIS.

Breeder/Owner/Handler

Frances J. Stoll

R.R. #3, Box 429

Washington, Indiana 47501

Phone (812) 254-3857

Ginger's Owner/Handler

E. Suzann Henderson

101 Northshore Drive

Morton, Illinois 61550

Phone (309) 266-9736

DOLL-MCGINNIS PUBLICATIONS

8848 BEVERLY HILLS

LAKELAND, FL 33809

LINDA GALLACHER PR 12/90
1990 RIDGE WAY DR
EUGENE OR 97401
USA 3

BULK RATE
U.S. POSTAGE
PAID

PERMIT #395
LAKELAND, FL

NEWS PUBLICATION - DO NOT DELAY - ADDRESS CORRECTION REQUESTED